



**Guide Price**  
**£280,000**

**Freehold**

3x  1x  1x 

**Nash Court Road,  
Margate, Kent, CT9**

*Wards*  
Helping you move forwards





## Main features

- Wrap around garden ideal for those with green fingers
- Generous size rooms
- Off Road Parking
- Fully adapted for disabled living
- Good bus routes to get you to Westwood Cross Shopping centre

## Accommodation

### GROUND FLOOR

Hallway

Kitchen/Lounge: 28'2 x 10'0 (8.59m x 3.05m)

Utility Room: 14'5 x 4'9 (4.40m x 1.45m)

Wet Room: 9'2 x 4'5 (2.80m x 1.35m)

Bedroom 1: 14'3 x 11'5 (4.35m x 3.48m)

Bedroom 2: 11'7 x 9'11 (3.53m x 3.02m)

Bedroom 3: 10'1 x 10'0 (3.08m x 3.05m)

### OUTSIDE

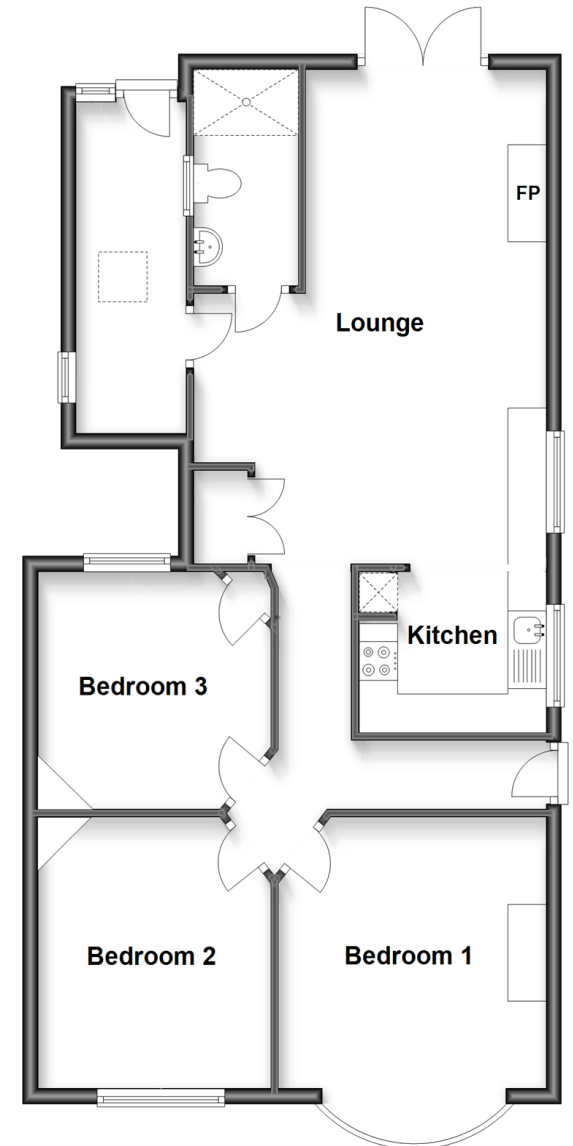
Front Garden

Side Garden

Off Road Parking to side

Rear Garden

**Ground Floor**  
Approx. 80.8 sq. metres (870.2 sq. feet)



**Call Cliftonville - 01843 227447 ■ [wardsof Kent.co.uk](http://wardsof Kent.co.uk)**

- A private rental licensing scheme applies to some properties in this area, please contact us before proceeding
- Legal advice should be taken to verify fixtures/fittings, planning, alterations and/or lease details
- Appliances & services are untested, dimensions are approximate and floor plans are not to scale



15110504/20230915/NF/NF