



Price
£700,000

Freehold

4x  2x  1x 

**Canterbury Road,
Westbrook, Margate,
Kent, CT9**

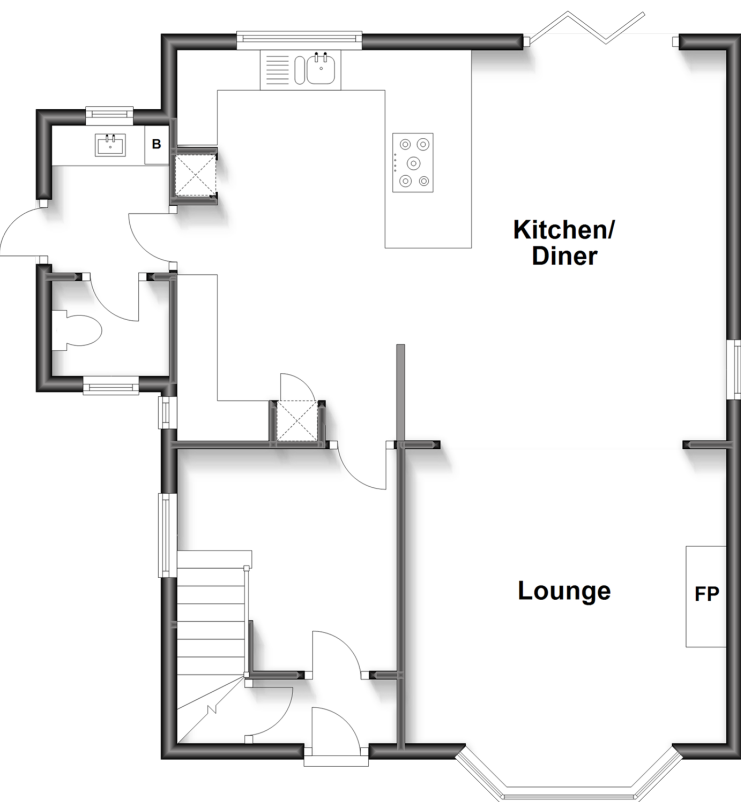
OVER 60?

You could get up to
59% off the price!*

Wards
Helping you move forwards

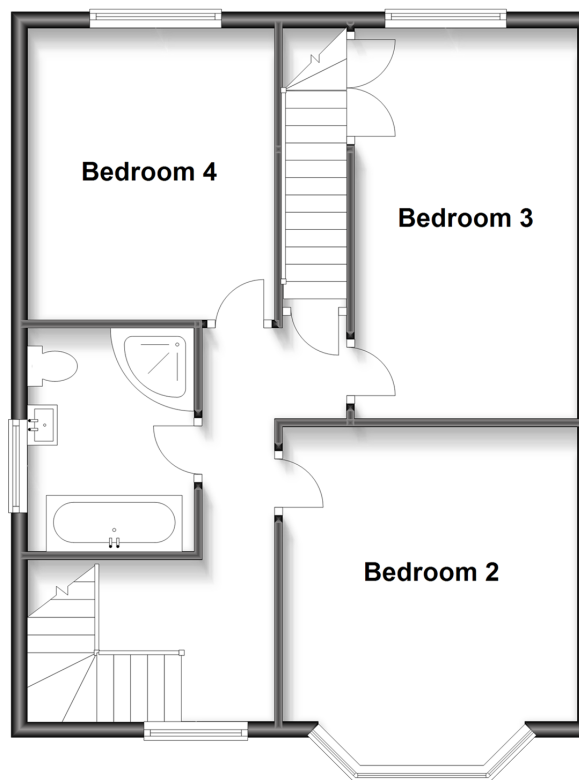
Ground Floor

Approx. 63.8 sq. metres (686.6 sq. feet)



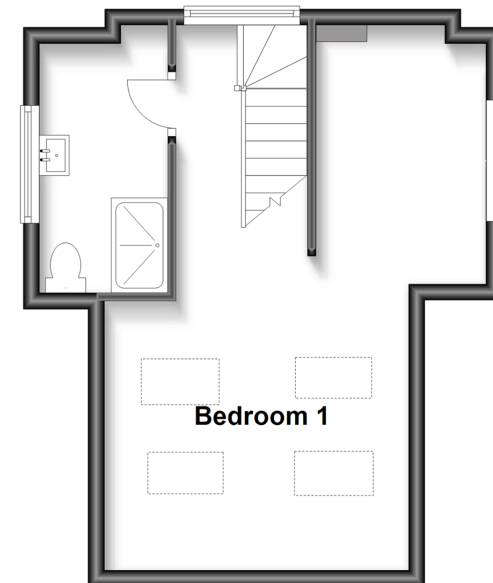
First Floor

Approx. 59.0 sq. metres (634.7 sq. feet)



Second Floor

Approx. 30.9 sq. metres (332.8 sq. feet)



Accommodation

GROUND FLOOR

Hallway

Lounge/Diner: 28'3 x 12'10 (8.62m x 3.91m)

Kitchen: 15'11 x 8'10 (4.85m x 2.69m)

Utility Room: 5'11 x 4'9 (1.80m x 1.45m)

FIRST FLOOR

Landing

Bathroom : 8'11 x 6'6 (2.72m x 1.98m)

Bedroom 2: 15'11 x 8'10 (4.85m x 2.69m)

Bedroom 3: 12'1 x 9'10 (3.69m x 3.00m)

Bedroom 4: 13'8 x 11'11 (4.17m x 3.63m)

SECOND FLOOR

Landing

Bedroom 1: 22'6 x 12'4 (6.86m x 3.76m)

Shower Room

Walk in Wardrobe

OUTSIDE

Front Garden

Off Road Parking

Side Garden

Rear Garden

Summerhouse: 27'3 x 13'0 (8.31m x 3.97m)



Main features

- Beautiful traditional style home, ready for you to unpack and move in
- Stunning lounge/diner ideal for entertaining friends and family
- Keep those bills in check with a handy wood burner in the lounge
- Lovely rear and side garden to sit and relax
- Fantastic summerhouse with a twist
- Oodles of Off Road Parking



Nearest Schools

Primary Schools: Garlinge Primary and Nursery 0.4 miles, St Saviour's C of E Junior School 0.7 miles, St Gregory's Catholic Primary, Margate 1.2 miles

Secondary Schools: Hartsdown Technology College 0.7



Transport Information

Train Stations: Westgate-on-Sea 0.6 miles, Margate 0.9 miles, Birchington-On-Sea 2.1 miles



Address

Canterbury Road, Westbrook, Margate, Kent, CT9



Directions

For directions to this property please contact us.



Wards
Helping you move forwards

Call Cliftonville Branch 01843 227447 ■ wardsofkent.co.uk



- A private rental licensing scheme applies to some properties in this area, please contact us before proceeding
- Appliances & services are untested, dimensions are approximate and floor plans are not to scale

- Legal advice should be taken to verify fixtures/fittings, planning, alterations and/or lease details
- Our Homewise partnership offer a 'Home for Life' plan to buyers over 60, granting a lifetime lease for your protection and reducing the purchase price by up to 59%



15110506/20220916/KP/NF