



OVER 60?

Secure this property
for up to **59% less!**

Price

£270,000

Freehold

2x  1x  2x 

**Nash Court Gardens,
Margate, Kent, CT9**

Wards
Helping you move forwards



Main features

- **Fantastic first time purchase**
- **Great location close to hospital and local amenities**
- **Pretty secluded rear garden**
- **When the weather is not so clement you can still enjoy the garden from your conservatory**
- **Bedrooms are both a double size**
- **Bathroom is lovely and spacious**

Accommodation

SPLIT LEVEL GROUND FLOOR

Entrance Porch

Lounge: 15'2 x 14'0 (4.63m x 4.27m)

Dining Area: 11'8 x 11'3 (3.56m x 3.43m)

Kitchen: 9'1 x 7'3 (2.77m x 2.21m)

Conservatory: 9'3 x 8'3 (2.82m x 2.52m)

SPLIT LEVEL FIRST FLOOR

Landing

Bedroom 1: 15'1 x 15'0 (4.60m x 4.58m)

Bedroom 2: 11'2 x 9'8 (3.41m x 2.95m)

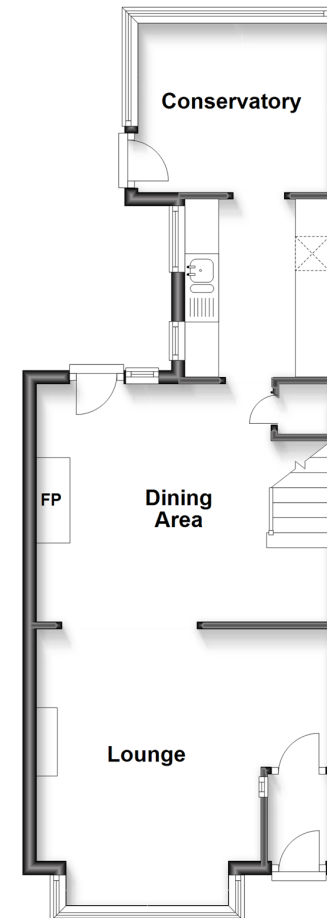
Bathroom : 9'0 x 7'5 (2.75m x 2.26m)

OUTSIDE

Rear Garden

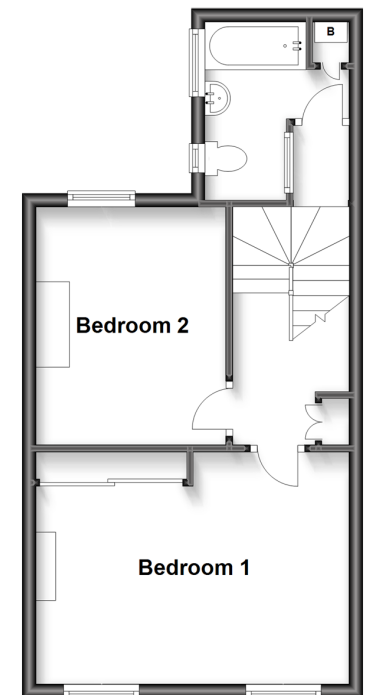
Split Level Ground Floor

Approx. 44.8 sq. metres (482.3 sq. feet)



Split Level First Floor

Approx. 38.2 sq. metres (410.7 sq. feet)



Call Cliftonville - 01843 227447 ■ wardsofkent.co.uk

- A private rental licensing scheme applies to some properties in this area, please contact us before proceeding
- Legal advice should be taken to verify fixtures/fittings, planning, alterations and/or lease details
- Appliances & services are untested, dimensions are approximate and floor plans are not to scale
- Through a Homewise Home For Life Plan people aged 60+ can secure this property for up to 59% less, by purchasing a Lifetime Lease.



15110614/20230112/DM/VH