



OVER 60?

Secure this property
for up to **59% less!**

Price

£450,000

Freehold

3x  1x  2x 

**The Courts, Margate,
Kent, CT9**

Wards
Helping you move forwards



Main features

- Perfect family home
- Large spacious rooms throughout
- Chain free
- Situated in a popular area, close to local amenities and schools
- Large green area situated in the quiet cul-de-sac, perfect if you have children or dogs

Accommodation

GROUND FLOOR

Hallway

Lounge: 13'3 x 12'0 (4.04m x 3.66m)

Dining Room: 12'0 x 11'9 (3.66m x 3.58m)

Conservatory

Kitchen: 9'1 x 7'5 (2.77m x 2.26m)

FIRST FLOOR

Landing

Shower Room: 7'4 x 5'2 (2.24m x 1.58m)

Separate Toilet

Bedroom 1: 12'1 x 11'11 (3.69m x 3.63m)

Bedroom 2: 12'2 x 12'0 (3.71m x 3.66m)

Bedroom 3: 7'11 x 7'5 (2.41m x 2.26m)

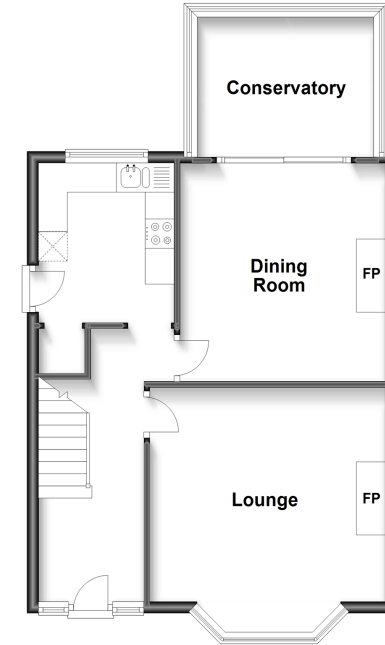
OUTSIDE

Rear Garden

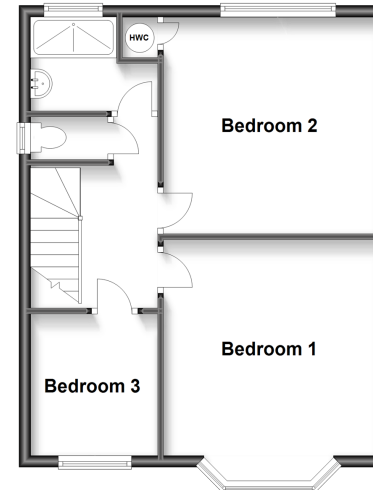
Off Road Parking

Outbuilding

Ground Floor
Approx. 53.1 sq. metres (571.5 sq. feet)



First Floor
Approx. 45.4 sq. metres (488.6 sq. feet)



Call Birchington - 01843 842551 ■ wardsofKent.co.uk

- A private rental licensing scheme applies to some properties in this area, please contact us before proceeding
- Legal advice should be taken to verify fixtures/fittings, planning, alterations and/or lease details
- Appliances & services are untested, dimensions are approximate and floor plans are not to scale
- Through a Homewise Home For Life Plan people aged 60+ can secure this property for up to 59% less, by purchasing a Lifetime Lease.



15110618/20230308/EM/NW