



OVER 60?

Secure this property
for up to **59% less!**

Price

£375,000

Freehold

2x  1x  1x 

**Northdown Park Road,
Cliftonville, Margate,
Kent, CT9**

Wards
Helping you move forwards



Main features

- **Fantastic opportunity to make your dream home**
- **Chain free and vacant**
- **Off Road Parking**
- **Stunning rear garden to sit and relax**
- **Desirable location on tree lined road**
- **Close to bus stops, shops and schools**

Accommodation

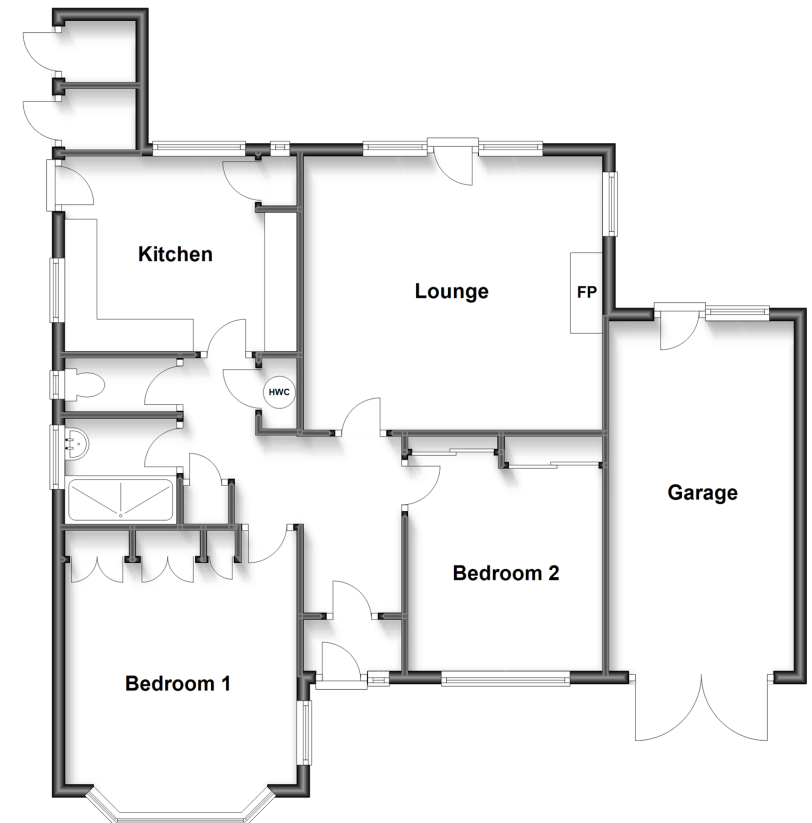
GROUND FLOOR

- Porch
- Hallway
- Lounge: 15'3 x 13'11 (4.65m x 4.24m)
- Kitchen: 11'10 x 9'11 (3.61m x 3.02m)
- Shower Room : 5'7 x 5'4 (1.70m x 1.63m)
- Separate Toilet
- Bedroom 1: 12'11 x 11'11 (3.94m x 3.63m)
- Bedroom 2: 10'10 x 9'11 (3.30m x 3.02m)

OUTSIDE

- Front Garden
- Garage
- Off Road Parking
- Rear Garden

Ground Floor
Approx. 92.1 sq. metres (991.8 sq. feet)



Call Cliftonville - 01843 227447 ■ wardsofkent.co.uk

- A private rental licensing scheme applies to some properties in this area, please contact us before proceeding
- If buying to let, the energy rating will need to be improved to at least 'E' rating before you can let the property
- Legal advice should be taken to verify fixtures/fittings, planning, alterations and/or lease details
- Appliances & services are untested, dimensions are approximate and floor plans are not to scale
- Through a Homewise Home For Life Plan people aged 60+ can secure this property for up to 59% less, by purchasing a Lifetime Lease.

EPC RATING Lightbulb icon 0000	CURRENT: F(36)	POTENTIAL: B(83)
The Property Ombudsman	INVESTORS IN PEOPLE 15110623/20231114/DM/NF	