



Price

£155,000

Leasehold

3x  3x  1x 

**Sunrise Close, Margate,
Kent, CT9**

Wards
Helping you move forwards



Main features

- Well presented ready to move in
- Shared equity 40%
- Kitchen with integrated appliances
- Doors leading out to rear garden
- Off road parking
- Walking distance to sandy beaches, shops and schools
- Save money on energy with the superb insulation

Accommodation

GROUND FLOOR

Entrance Hall

Lounge: 13'9 x 9'9 (4.19m x 2.97m)

Kitchen: 17'1 x 10'0 (5.21m x 3.05m)

Cloakroom

FIRST FLOOR

Landing

Bedroom 1: 11'0 x 10'4 (3.36m x 3.15m)

En-suite Shower Room

Bedroom 2: 10'6 x 8'8 (3.20m x 2.64m)

Bedroom 3: 9'0 x 6'4 (2.75m x 1.93m)

Bathroom

OUTSIDE

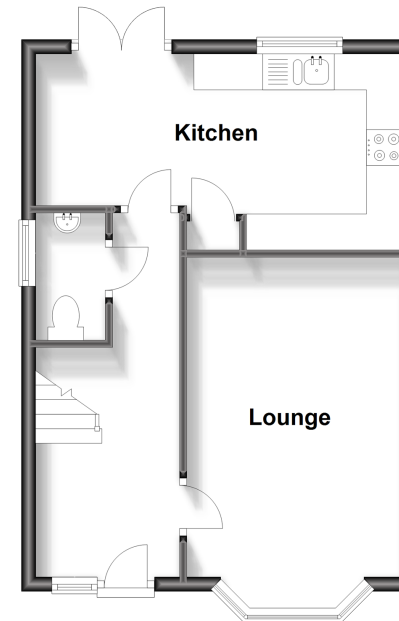
Front Garden

Off Road Parking

Rear Garden

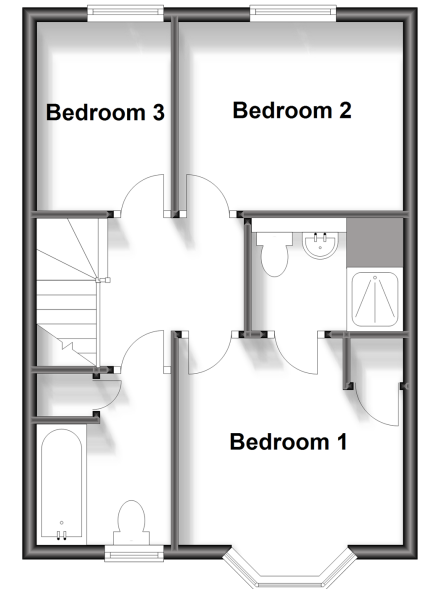
Ground Floor

Approx. 37.5 sq. metres (403.2 sq. feet)



First Floor

Approx. 37.4 sq. metres (402.3 sq. feet)



Call Cliftonville - 01843 227447 ■ wardsofkent.co.uk

- A private rental licensing scheme applies to some properties in this area, please contact us before proceeding
- Legal advice should be taken to verify fixtures/fitings, planning, alterations and/or lease details
- Appliances & services are untested, dimensions are approximate and floor plans are not to scale



15110647/20230818/KP/VH