

Price
£325,000

Freehold

4x  1x  2x 

**Dane Hill Row, Margate,
Kent, CT9**

OVER 60?

Secure this property
for up to **59% less!**



Video Tour available

Wards
Helping you move forwards



Main features

- Chain free
- Flexible accommodation throughout
- Newly renovated bathroom
- Separate dining room and lounge
- Basement tanked
- Walking distance to Margate sandy beaches and train station
- Potential for off street parking in rear garden

Accommodation

SPLIT LEVEL GROUND FLOOR

Hallway

Lounge: 13'3 x 12'4 (4.04m x 3.76m)

Dining Room : 9'6 x 8'7 (2.90m x 2.62m)

Kitchen: 13'1 x 6'6 (3.99m x 1.98m)

BASEMENT

Cellar 1: 9'9 x 8'9 (2.97m x 2.67m)

Cellar 2: 15'6 x 11'1 (4.73m x 3.38m)

SPLIT LEVEL FIRST FLOOR

Landing

Bathroom: 12'6 x 5'9 (3.81m x 1.75m)

Bedroom 1: 15'0 into bay x 13'3 (4.58m x 4.04m)

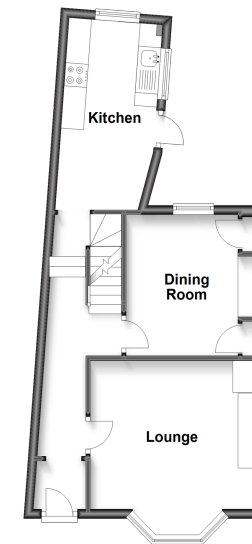
Bedroom 2: 9'8 x 8'8 (2.95m x 2.64m)

OUTSIDE

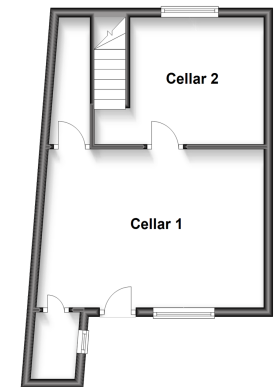
Front Garden

Rear Garden

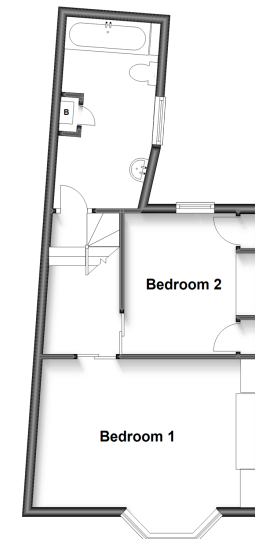
Split Level Ground Floor
Approx. 39.3 sq. metres (422.6 sq. feet)



Basement
Approx. 31.6 sq. metres (339.8 sq. feet)



Split Level First Floor
Approx. 39.3 sq. metres (422.7 sq. feet)



Call Cliftonville - 01843 227447 ■ wardsofkent.co.uk

- A private rental licensing scheme applies to some properties in this area, please contact us before proceeding
- Legal advice should be taken to verify fixtures/fittings, planning, alterations and/or lease details
- Appliances & services are untested, dimensions are approximate and floor plans are not to scale
- Through a Homewise Home For Life Plan people aged 60+ can secure this property for up to 59% less, by purchasing a Lifetime Lease.



15110664/20221130/DM/KP