



OVER 60?

Secure this property
for up to **59% less!**

Price

£700,000

Freehold

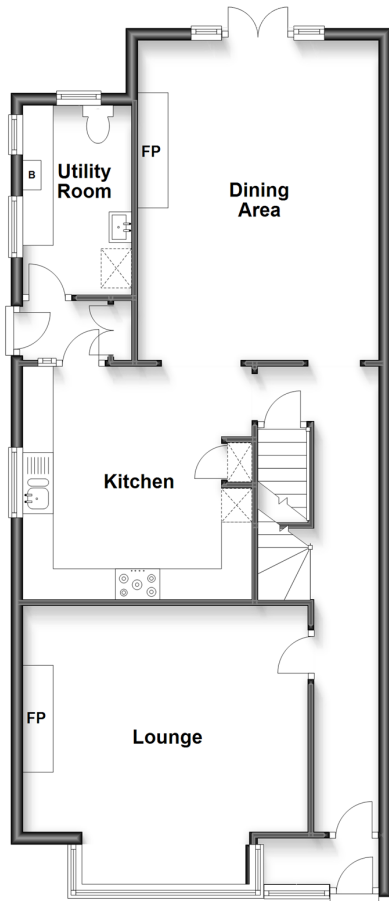
5x  2x  2x 

**Prices Avenue, Margate,
Kent, CT9**

Wards
Helping you move forwards

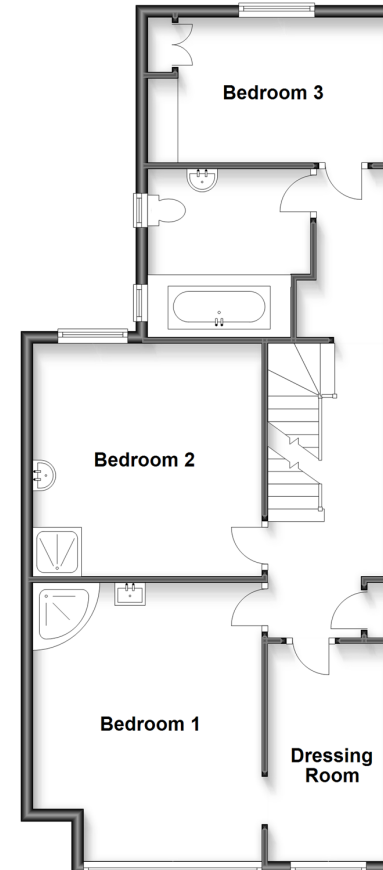
Ground Floor

Approx. 76.3 sq. metres (821.6 sq. feet)



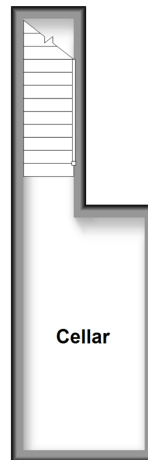
First Floor

Approx. 69.7 sq. metres (750.6 sq. feet)



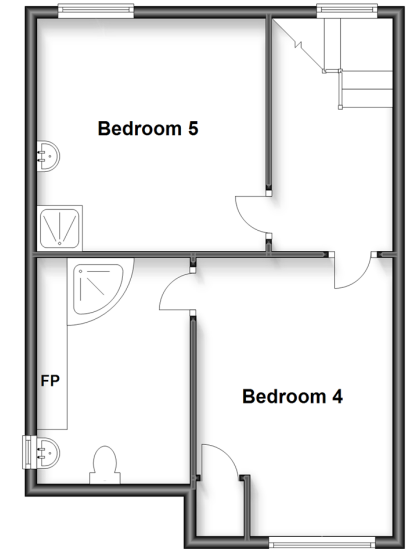
Basement

Approx. 10.2 sq. metres (109.9 sq. feet)



Second Floor

Approx. 47.2 sq. metres (507.7 sq. feet)



Accommodation

GROUND FLOOR

Entrance Porch

Hallway

Lounge: 15'2 x 14'9 (4.63m x 4.50m)

Kitchen: 11'9 x 11'9 (3.58m x 3.58m)

Dining Area: 16'9 x 12'6 (5.11m x 3.81m)

Utility Room : 9'6 x 5'4 (2.90m x 1.63m)

BASEMENT

Cellar

FIRST FLOOR

Landing

Bedroom 1 with shower: 15'0 x 11'8 (4.58m x 3.56m)

Dressing Room

Bedroom 2 with shower: 11'2 x 6'6 (3.41m x 1.98m)

Bedroom 3: 11'4 x 7'2 (3.46m x 2.19m)

Bathroom : 8'5 x 8'2 (2.57m x 2.49m)

SECOND FLOOR

Landing

Bedroom 4: 11'9 x 11'8 (3.58m x 3.56m)

Bedroom 5 with shower: 14'9 x 10'10 (4.50m x 3.30m)

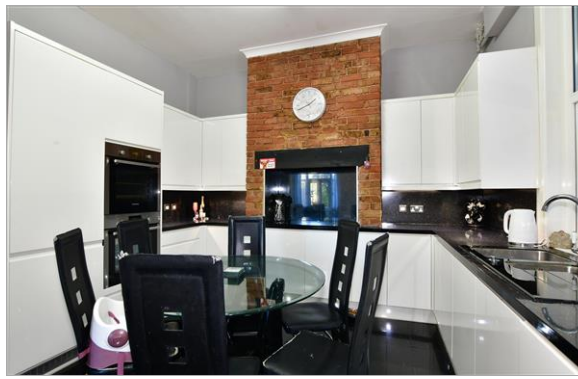
Shower Room

OUTSIDE

Front Garden

Outside Pub: 16'9 x 12'11 (5.11m x 3.94m)

Rear Garden



Main features

- Huge period character house
- Highly desirable road close to shops and restaurants
- Fantastic condition, ready to unpack and move straight in
- Masses of space for all the family
- Hours of fun to be had in your home pub in the garden
- Excellent catchment area for local schools



Nearest Schools

Primary Schools: Cliftonville Primary 0.6 miles, Northdown Primary 0.9 miles, Drapers Mills Primary 1.0 miles

Further Education: Hartsdown Technology College 1.8 miles, Dane Court Grammar School 2.7 miles, St George's

Transport Information

Train Stations: Margate 1.5 miles, Westgate-on-Sea 3.4 miles, Broadstairs 3.4 miles

Address

Prices Avenue, Margate, Kent, CT9

Directions

For directions to this property please contact us.





Wards
Helping you move forwards

Call Cliftonville Branch 01843 227447 ■ wardsofkent.co.uk



- A private rental licensing scheme applies to some properties in this area, please contact us before proceeding
- Appliances & services are untested, dimensions are approximate and floor plans are not to scale

- Legal advice should be taken to verify fixtures/fittings, planning, alterations and/or lease details
- Through a Homewise Home For Life Plan people aged 60+ can secure this property for up to 59% less, by purchasing a Lifetime Lease.



15110762/20230222/DM/VH