



**Guide Price**  
**£610,000**

**Freehold**

4x  3x  2x 

**Turners Close, Margate,  
Kent, CT9**

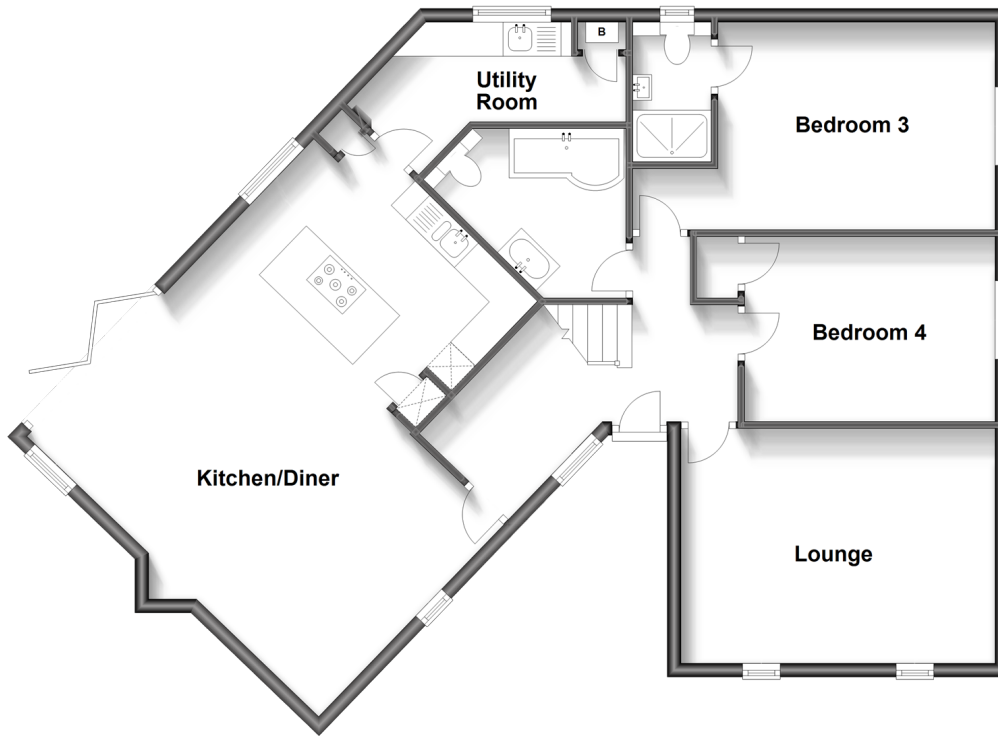
**OVER 60?**

Secure this property  
for up to **59% less!**

*Wards*  
Helping you move forwards

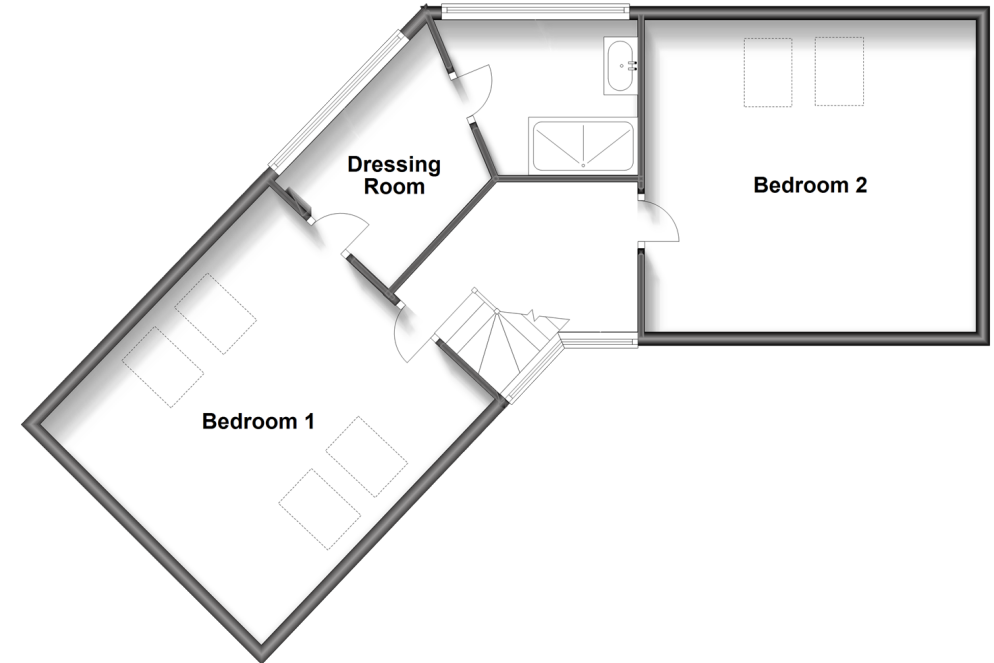
### Ground Floor

Approx. 100.4 sq. metres (1080.4 sq. feet)



### First Floor

Approx. 65.4 sq. metres (704.2 sq. feet)



## Accommodation

### GROUND FLOOR

Entrance Hall  
 Kitchen/Dinner: 21'9 x 19'5 (6.63m x 5.92m)  
 Utility Room: 13'5 x 6'3 (4.09m x 1.91m)  
 Lounge: 15'0 x 11'3 (4.58m x 3.43m)  
 Bedroom 4: 12'0 x 8'10 (3.66m x 2.69m)  
 Bedroom 3: 13'3 x 9'11 (4.04m x 3.02m)  
 En-suite Shower Room : 6'8 x 3'8 (2.03m x 1.12m)  
 Bathroom: 9'7 x 8'1 (2.92m x 2.47m)

### FIRST FLOOR

Landing  
 Bedroom 1: 15'11 x 15'0 (4.85m x 4.58m)  
 Dressing Room: 9'0 x 7'9 (2.75m x 2.36m)  
 En-suite shower room : 8'1 x 7'5 (2.47m x 2.26m)  
 Bedroom 2: 15'11 x 15'0 (4.85m x 4.58m)

### OUTSIDE

Front Garden  
 Off Road Parking  
 Rear Garden





## Main features

- Versatile living accommodation suitable for a variety of buyers
- Beautifully presented throughout, just unpack and enjoy your new home
- Low maintenance garden to sit and relax with friends and family
- Under floor heating zones for each room
- Private road, secure entry system, CCTV and plenty of off road parking



### Nearest Schools

Primary Schools: St Gregory's Catholic Primary, Margate 0.1 miles, Salmestone Primary 0.1 miles, Drapers Mills Primary 0.5 miles  
Secondary Schools: Hartsdown Technology College 0.6 miles, , Laleham Gap School 1.1 miles



### Transport Information

Train Stations: Margate 0.8 miles, Westgate-on-Sea 1.9 miles, Broadstairs 2.4 miles



### Address

Turners Close, Margate, Kent, CT9



### Directions

For directions to this property please contact us.



**Wards**  
Helping you move forwards

Call Cliftonville Branch 01843 227447 ■ [wardsofkent.co.uk](http://wardsofkent.co.uk)



- A private rental licensing scheme applies to some properties in this area, please contact us before proceeding
- Appliances & services are untested, dimensions are approximate and floor plans are not to scale

- Legal advice should be taken to verify fixtures/fittings, planning, alterations and/or lease details
- Through a Homewise Home For Life Plan people aged 60+ can secure this property for up to 59% less, by purchasing a Lifetime Lease.



15110785/20231209/NF/NF