



Guide Price
£450,000

Freehold

4x  1x  1x 

**Canterbury Road,
Westbrook, Margate,
Kent, CT9**

OVER 60?

Secure this property
for up to **59% less!**

Wards
Helping you move forwards



Main features

- Fantastic opportunity for a growing family in a great location
- Large welcoming entrance hall
- Patio doors looking out to garden
- Plenty of space for entertaining
- Walking distance to main line train station and sandy beaches
- Off Road Parking

Accommodation

GROUND FLOOR

Entrance Porch
Hallway
Dining Room : 16'3 x 15'8 (4.96m x 4.78m)
Kitchen: 11'1 x 10'6 (3.38m x 3.20m)
Lounge: 16'0 x 12'5 (4.88m x 3.79m)
Separate Toilet

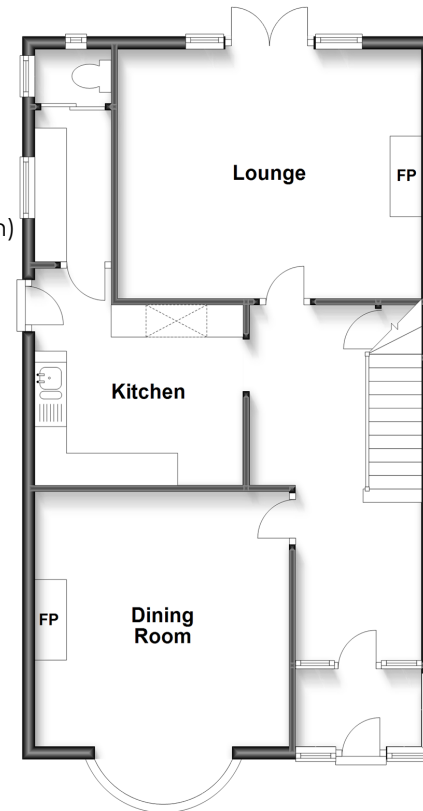
FIRST FLOOR

Landing
Bedroom 1: 17'5 x 13'1 (5.31m x 3.99m)
Bedroom 2: 13'1 x 10'11 (3.99m x 3.33m)
Bedroom 3: 12'5 x 8'9 (3.79m x 2.67m)
Bathroom: 8'11 x 8'2 (2.72m x 2.49m)
Bedroom 4: 11'10 x 7'8 (3.61m x 2.34m)

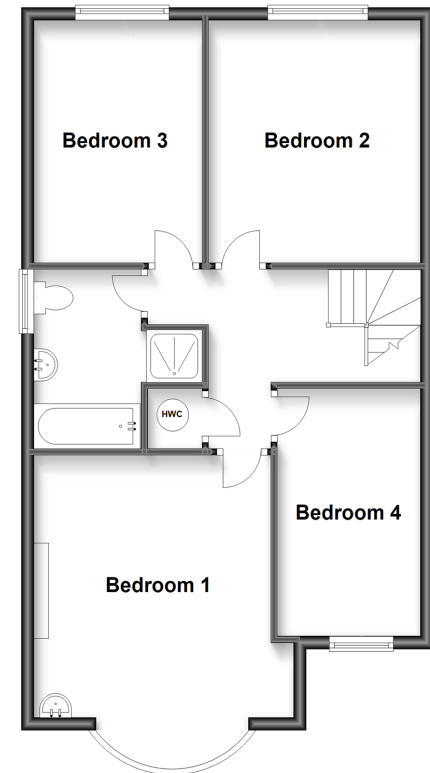
OUTSIDE

Front Garden
Off Road Parking
Rear Garden

Ground Floor
Approx. 66.6 sq. metres (716.5 sq. feet)

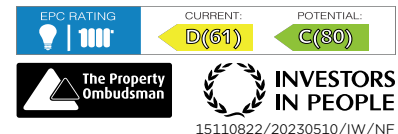


First Floor
Approx. 64.0 sq. metres (688.9 sq. feet)



Call Cliftonville - 01843 227447 ■ wardsofkent.co.uk

- A private rental licensing scheme applies to some properties in this area, please contact us before proceeding
- Legal advice should be taken to verify fixtures/fittings, planning, alterations and/or lease details
- Appliances & services are untested, dimensions are approximate and floor plans are not to scale
- Through a Homewise Home For Life Plan people aged 60+ can secure this property for up to 59% less, by purchasing a Lifetime Lease.



15110822/20230510/IW/NF