



OVER 60?

Secure this property
for up to **59% less!**

Price

£300,000

Freehold

2x  1x  1x 

**High Street, Margate,
Kent, CT9**

Wards
Helping you move forwards



Main features

- No onward chain
- Quiet location
- Courtyard garden to sit and relax
- Separate lounge and dining area ideal for entertaining friends and family
- Suitable for an array of buyers

Accommodation

GROUND FLOOR

Hallway

Lounge: 11'9 x 10'0 (3.58m x 3.05m)

Dining Area: 11'9 x 9'0 (3.58m x 2.75m)

Kitchen: 10'1 x 7'6 (3.08m x 2.29m)

FIRST FLOOR

Landing

Bedroom 1: 12'1 x 11'8 (3.69m x 3.56m)

Bedroom 2: 11'9 x 9'0 (3.58m x 2.75m)

Bathroom

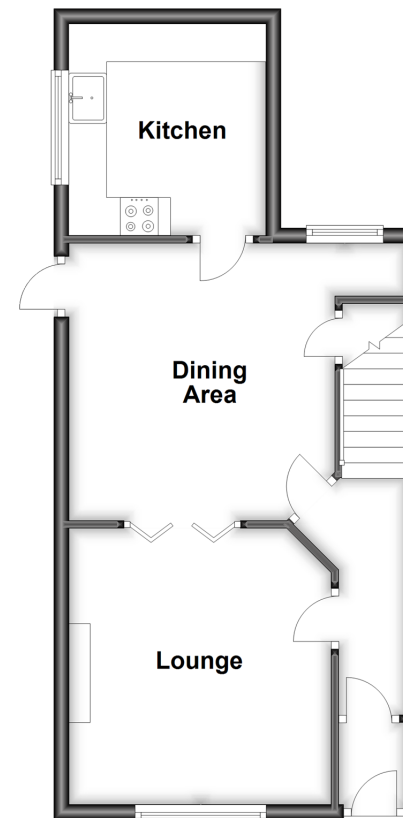
OUTSIDE

Front Garden

Courtyard Rear Garden

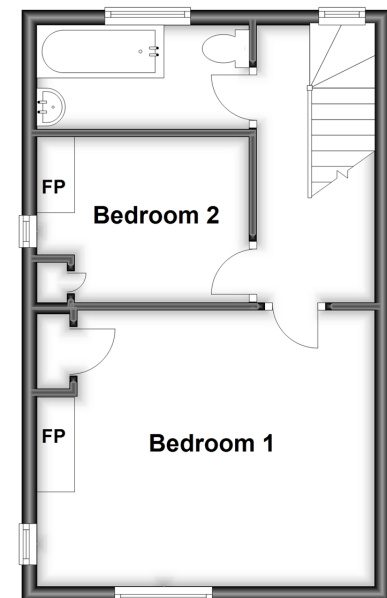
Ground Floor

Approx. 40.7 sq. metres (438.1 sq. feet)



First Floor

Approx. 33.2 sq. metres (356.9 sq. feet)



Call Cliftonville - 01843 227447 ■ wardsofkent.co.uk

- A private rental licensing scheme applies to some properties in this area, please contact us before proceeding
- Legal advice should be taken to verify fixtures/fittings, planning, alterations and/or lease details
- Appliances & services are untested, dimensions are approximate and floor plans are not to scale
- Through a Homewise Home For Life Plan people aged 60+ can secure this property for up to 59% less, by purchasing a Lifetime Lease.



15110829/20240321/DM/VH