



OVER 60?

Secure this property
for up to **59% less!**

Price
£475,000

Freehold

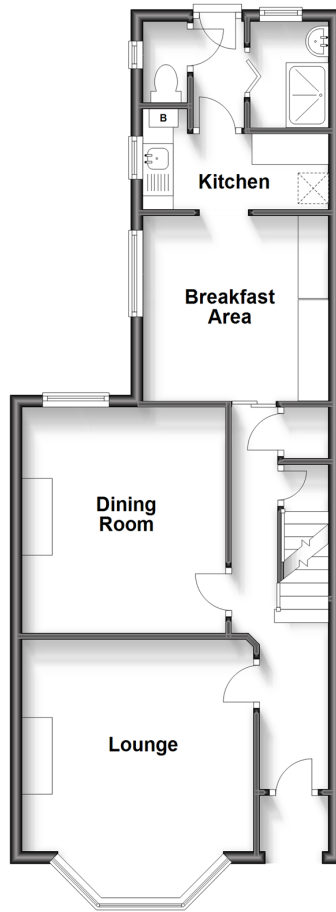
5x  2x  1x 

**Garfield Road, Margate,
Kent, CT9**

Wards
Helping you move forwards

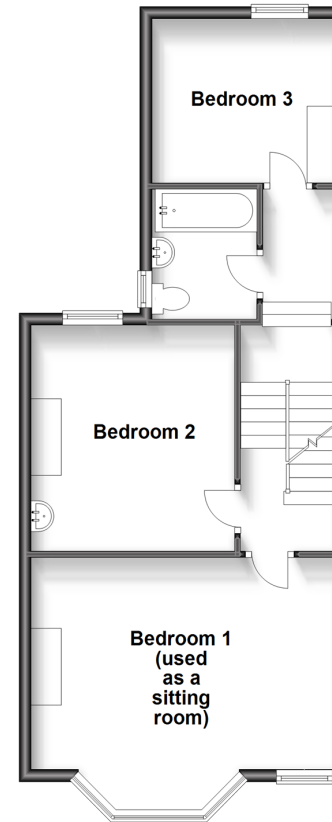
Split Level Ground Floor

Approx. 55.2 sq. metres (593.7 sq. feet)



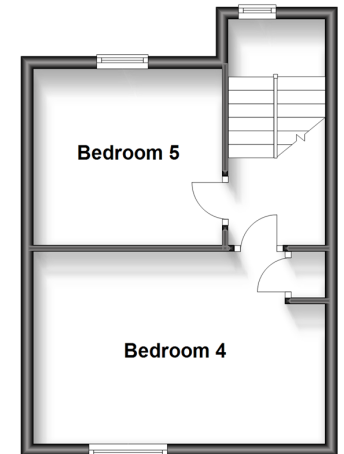
Split Level First Floor

Approx. 52.4 sq. metres (564.4 sq. feet)



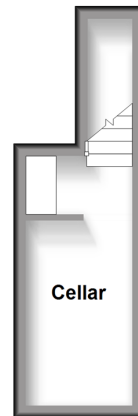
Second Floor

Approx. 30.7 sq. metres (330.8 sq. feet)



Basement

Approx. 8.8 sq. metres (94.4 sq. feet)



Accommodation

SPLIT LEVEL GROUND FLOOR

Hallway

Lounge: 14'3 x 12'9 (4.35m x 3.89m)

Dining Room : 12'3 x 11'4 (3.74m x 3.46m)

Breakfast Room: 10'4 x 10'1 (3.15m x 3.08m)

Kitchen: 10'3 x 5'0 (3.13m x 1.53m)

Shower Room

Cloakroom

BASEMENT

Cellar

SPLIT LEVEL FIRST FLOOR

Landing

Bedroom 1 used as sitting room: 17'2 x 14'5 (5.24m x 4.40m)

Bedroom 2: 12'4 x 11'5 (3.76m x 3.48m)

Bathroom

Bedroom 3: 10'2 x 8'10 (3.10m x 2.69m)

SECOND FLOOR

Landing

Bedroom 4: 15'10 x 10'6 (4.83m x 3.20m)

Bedroom 5: 10'3 x 9'6 (3.13m x 2.90m)

OUTSIDE

Front Garden

Courtyard Rear Garden



Main features

- Stunning period property with original features
- Cul-de-sac location for peace and quiet
- No onward chain complications
- Fantastic location with the train station, Dreamland and sandy beaches just a short stroll away
- Enjoy long sunny evenings in your garden after a day at the beach
- Just unpack and enjoy your new home



Nearest Schools

Primary Schools: Garlinge Primary and Nursery 0.5 miles, Margate, Holy Trinity and St John's C of E Primary 0.6 miles, Salmestone Primary 0.6 miles

Secondary Schools: Hartsdown Technology College 0.3



Transport Information

Train Stations: Margate 0.1 miles, Westgate-on-Sea 1.3 miles, Birchington-On-Sea 2.9 miles



Address

Garfield Road, Margate, Kent, CT9



Directions

For directions to this property please contact us.



Wards
Helping you move forwards

Call Cliftonville Branch 01843 227447 ■ wardsofkent.co.uk



- A private rental licensing scheme applies to some properties in this area, please contact us before proceeding
- Appliances & services are untested, dimensions are approximate and floor plans are not to scale

- Legal advice should be taken to verify fixtures/fittings, planning, alterations and/or lease details
- Through a Homewise Home For Life Plan people aged 60+ can secure this property for up to 59% less, by purchasing a Lifetime Lease.



15110867/20230629/IW/VH