



Price
£180,000

Leasehold

1x  1x  1x 

**Beresford Gardens,
Cliftonville, Margate,
Kent, CT9**

OVER 60?

Secure this property
for up to **59% less!**

Wards
Helping you move forwards



Main features

- Ground floor flat
- Immaculate throughout
- Ready to move straight into
- Open plan Kitchen/lounge ideal for entertaining friends and family
- Walking distance to sandy beaches, shops and restaurants

Accommodation

GROUND FLOOR

Hallway

Kitchen/Lounge/Diner: 20'0 x 16'5 (6.10m x 5.01m)

Bathroom : 7'4 x 6'0 (2.24m x 1.83m)

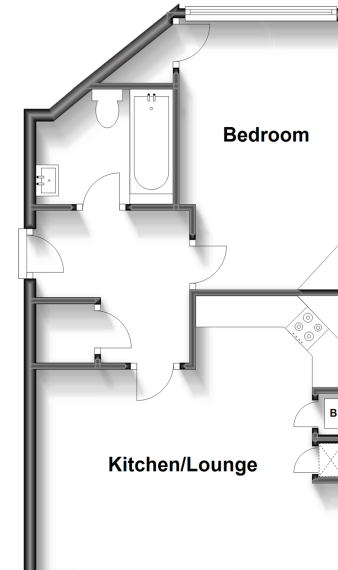
Bedroom : 14'2 x 8'8 (4.32m x 2.64m)

OUTSIDE

Rear Access

Ground Floor

Approx. 43.7 sq. metres (470.1 sq. feet)



Call Cliftonville - 01843 227447 ■ wardsof Kent.co.uk

- A private rental licensing scheme applies to some properties in this area, please contact us before proceeding
- Appliances & services are untested, dimensions are approximate and floor plans are not to scale

- Legal advice should be taken to verify fixtures/fittings, planning, alterations and/or lease details
- Through a Homewise Home For Life Plan people aged 60+ can secure this property for up to 59% less, by purchasing a Lifetime Lease.