



Price
£280,000

Freehold

3x  1x  1x 

**Cedar Close, Margate,
Kent, CT9**

OVER 60?

Secure this property
for up to **59% less!**

Wards
Helping you move forwards



Main features

- Great family home on a quiet cul-de-sac
- Low maintenance, sunny "Bijou" garden
- Wide driveway for off road parking
- Perfect first time home, ideally situated near to local schools, beach and amenities

Accommodation

GROUND FLOOR

Entrance Porch
Hallway
Lounge: 15'9 x 13'6 (4.80m x 4.12m)
Kitchen: 16'8 x 8'4 (5.08m x 2.54m)
Conservatory: 12'8 x 6'9 (3.86m x 2.06m)

FIRST FLOOR

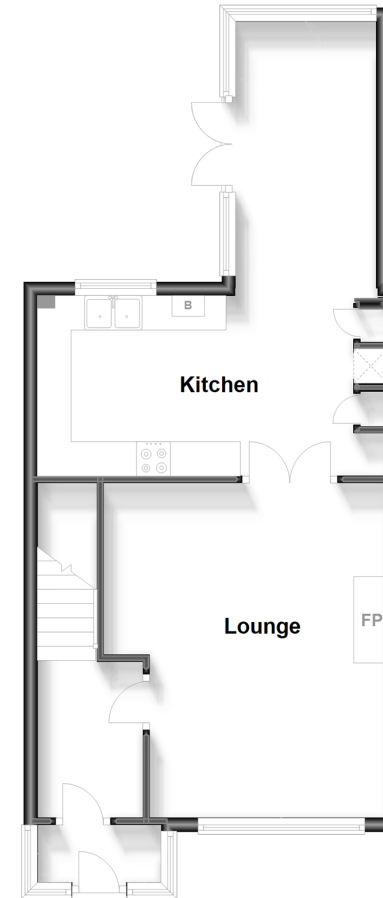
Landing
Bedroom 1: 13'3 x 10'0 (4.04m x 3.05m)
Bedroom 2: 9'6 x 9'6 (2.90m x 2.90m)
Bedroom 3: 10'5 x 6'4 (3.18m x 1.93m)
Bathroom

OUTSIDE

Front Garden
Off Road Parking
Rear Garden

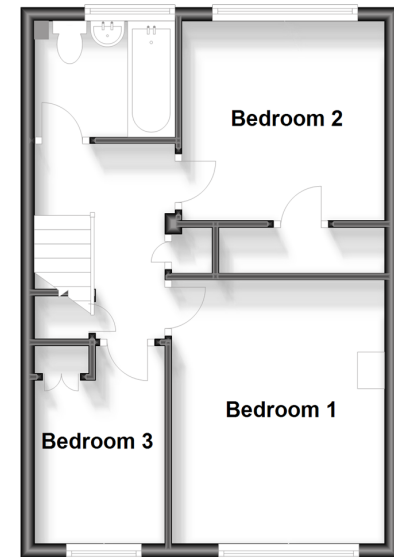
Ground Floor

Approx. 49.2 sq. metres (529.3 sq. feet)



First Floor

Approx. 39.2 sq. metres (421.9 sq. feet)



Call Cliftonville - 01843 227447 ■ wardsofkent.co.uk

- A private rental licensing scheme applies to some properties in this area, please contact us before proceeding
- Legal advice should be taken to verify fixtures/fittings, planning, alterations and/or lease details
- Appliances & services are untested, dimensions are approximate and floor plans are not to scale
- Through a Homewise Home For Life Plan people aged 60+ can secure this property for up to 59% less, by purchasing a Lifetime Lease.



15110903/20230801/KP/NF