



OVER 60?

Secure this property
for up to **59% less!**

Guide Price
£230,000

Leasehold

2x  1x  1x 

**Surrey Road,
Cliftonville, Margate,
Kent, CT9**

Wards
Helping you move forwards



Main features

- The size of a house without the price tag
- Enjoy long sunny days in your own private garden
- New lease which allows holiday rentals
- Great location close to the beach, Northdown Road shops and Margate Old town

Accommodation

GROUND FLOOR

Hallway

Lounge: 19'0 x 12'10 (5.80m x 3.91m)

Bedroom 1: 14'8 x 11'8 (4.47m x 3.56m)

Bathroom

Kitchen/Diner: 21'11 x 10'9 (6.68m x 3.28m)

BASEMENT

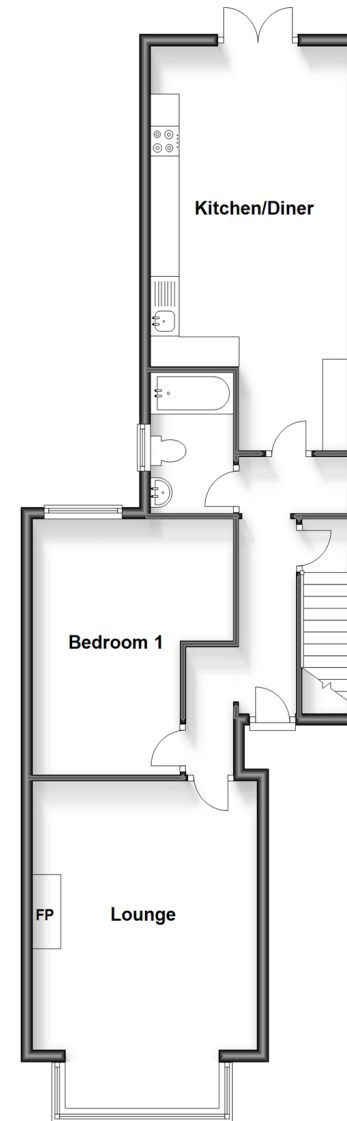
Bedroom 2: 17'2 x 14'2 (5.24m x 4.32m)

Storage cupboard: 10'2 x 3'10 (3.10m x 1.17m)

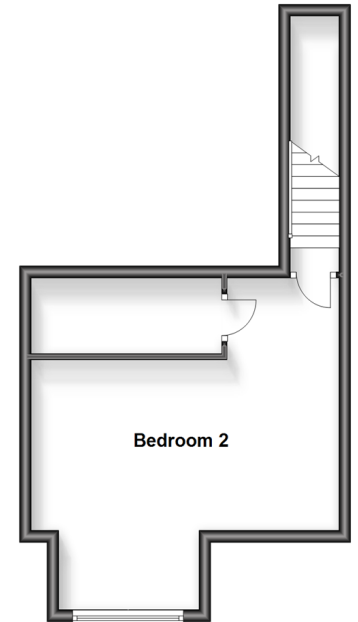
OUTSIDE

Rear Garden

Ground Floor
Approx. 69.4 sq. metres (746.7 sq. feet)



Basement
Approx. 30.1 sq. metres (323.8 sq. feet)



Call Cliftonville - 01843 227447 ■ wardsofkent.co.uk

- A private rental licensing scheme applies to some properties in this area, please contact us before proceeding
- Legal advice should be taken to verify fixtures/fittings, planning, alterations and/or lease details
- Appliances & services are untested, dimensions are approximate and floor plans are not to scale
- Through a Homewise Home For Life Plan people aged 60+ can secure this property for up to 59% less, by purchasing a Lifetime Lease.



15110923/20230916/DM/VH