



Guide Price
£450,000

Freehold

3x  1x  1x 

**Queen Elizabeth
Avenue, Margate, Kent,
CT9**

OVER 60?

Secure this property
for up to **59% less!**

Wards
Helping you move forwards



Main features

- Ready to move straight into, unpack and enjoy your new home
- Large entrance hallway
- Lounge with doors opening out to rear garden, ideal for entertaining
- No onward chain complications
- Walking distance to Northdown Park and local schools
- Garage and off road parking

Accommodation

GROUND FLOOR

Entrance Porch

Hallway

Lounge: 20'10 x 11'10 (6.35m x 3.61m)

Bedroom 1: 11'11 x 11'0 (3.63m x 3.36m)

Bedroom 2: 11'11 x 9'11 (3.63m x 3.02m)

Bedroom 3: 10'11 x 8'11 (3.33m x 2.72m)

Bathroom: 8'8 x 5'9 (2.64m x 1.75m)

Separate Toilet: 5'1 x 2'9 (1.55m x 0.84m)

Kitchen: 11'11 x 8'4 (3.63m x 2.54m)

OUTSIDE

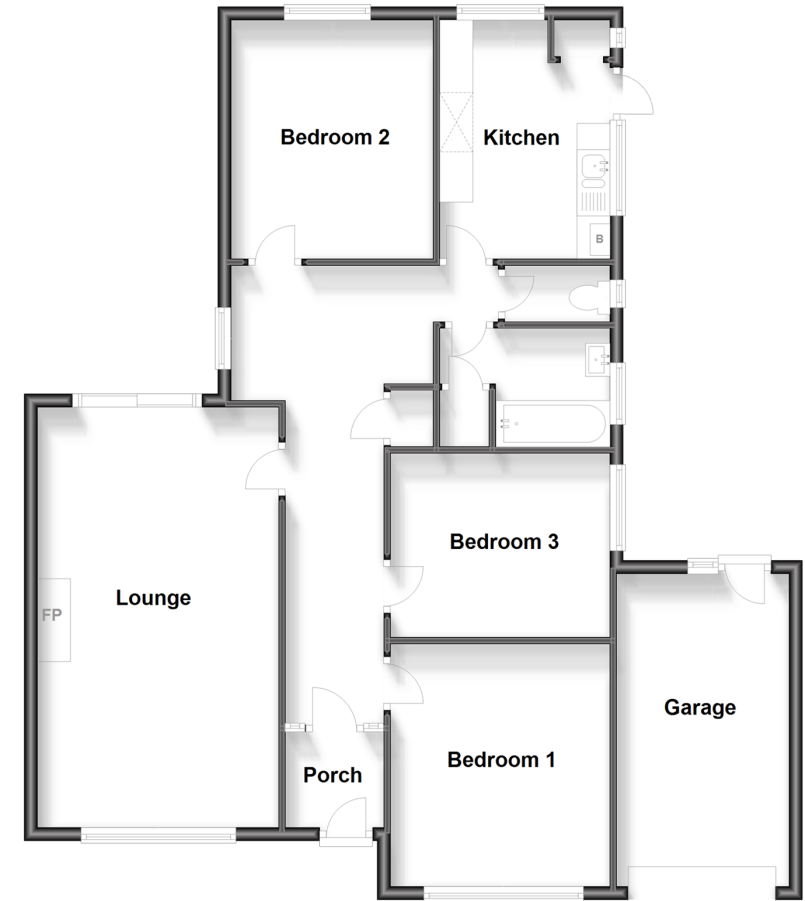
Front Garden

Garage

Off Road Parking

Rear Garden

Ground Floor
Approx. 104.3 sq. metres (1123.0 sq. feet)



Call Cliftonville - 01843 227447 ■ wardsofkent.co.uk

- A private rental licensing scheme applies to some properties in this area, please contact us before proceeding
- Legal advice should be taken to verify fixtures/fittings, planning, alterations and/or lease details
- Appliances & services are untested, dimensions are approximate and floor plans are not to scale
- Through a Homewise Home For Life Plan people aged 60+ can secure this property for up to 59% less, by purchasing a Lifetime Lease.



15110934/20240418/AP/NF