



**Guide Price**  
**£650,000**

**Freehold**

3x  1x  2x 

**Palm Bay Avenue, Palm  
Bay, Margate, Kent, CT9**

**OVER 60?**

Secure this property  
for up to **59% less!**

*Wards*  
Helping you move forwards





## Main features

- Front line with stunning sea views
- No onward chain complications
- Enjoy the ever changing seascape
- Plenty of space for when friends and family visit
- Separate dining area
- Wrap around garden

## Accommodation

### GROUND FLOOR

Entrance Porch

Cloakroom

Lounge: 23'4 x 15'7 (7.12m x 4.75m)

Dining Room: 12'8 x 8'8 (3.86m x 2.64m)

Store Room

Kitchen: 11'2 x 10'7 (3.41m x 3.23m)

Bedroom 1: 16'3 x 12'0 (4.96m x 3.66m)

Bedroom 2: 12'0 x 11'6 (3.66m x 3.51m)

Bedroom 3: 11'1 x 9'3 (3.38m x 2.82m)

Shower Room

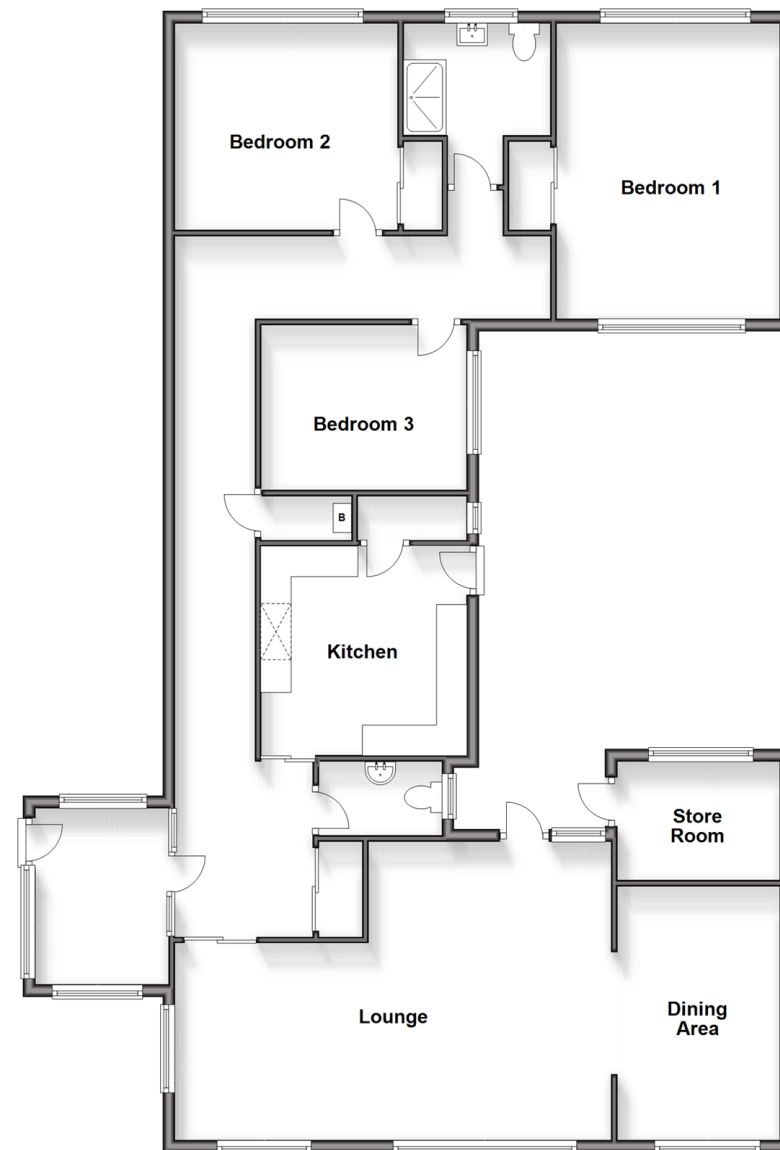
### OUTSIDE

Front Garden

Garage

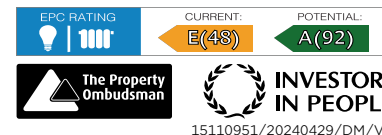
Courtyard rear garden

**Ground Floor**  
Approx. 147.4 sq. metres (1587.1 sq. feet)



**Call Cliftonville - 01843 227447 ■ [wardsofkent.co.uk](http://wardsofkent.co.uk)**

- A private rental licensing scheme applies to some properties in this area, please contact us before proceeding
- Legal advice should be taken to verify fixtures/fittings, planning, alterations and/or lease details
- Appliances & services are untested, dimensions are approximate and floor plans are not to scale
- Through a Homewise Home For Life Plan people aged 60+ can secure this property for up to 59% less, by purchasing a Lifetime Lease.



15110951/20240429/DM/VH