



OVER 60?

Secure this property
for up to **59% less!**

Price

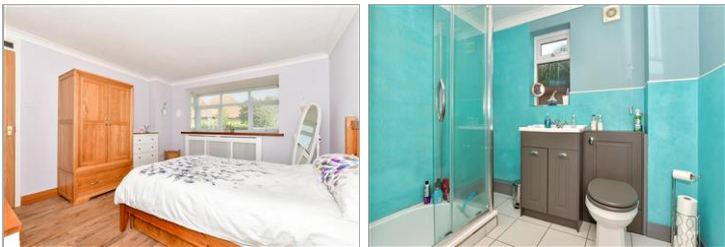
£350,000

Freehold

2x  1x  1x 

**Egerton Drive,
Cliftonville, Margate,
Kent, CT9**

Wards
Helping you move forwards



Main features

- Well presented, just unpack and enjoy your new home
- Available furnished or unfurnished
- Walking distance to Botany Bay and shops
- Private partially walled garden to sit and relax with family and friends
- Detached garage and off road parking

Accommodation

GROUND FLOOR

Hallway

Lounge/Dining Area: 23'0 x 12'2 (7.02m x 3.71m)

Kitchen: 10'7 x 8'4 (3.23m x 2.54m)

Shower Room : 7'9 x 6'10 (2.36m x 2.08m)

Bedroom 1: 12'9 x 11'11 (3.89m x 3.63m)

Bedroom 2: 11'3 x 7'10 (3.43m x 2.39m)

OUTSIDE

Front Garden

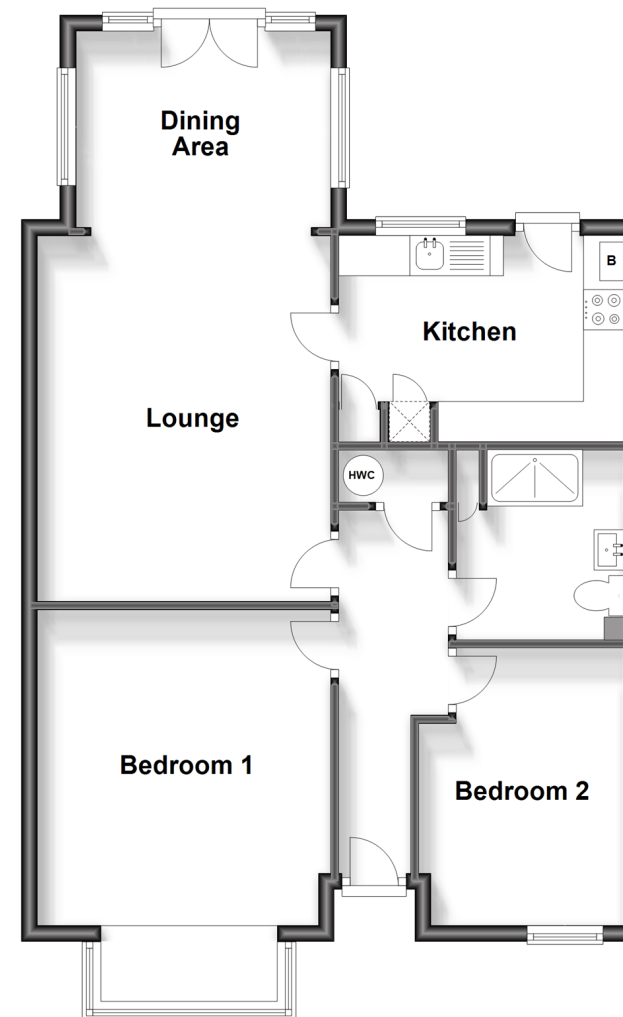
Garage

Off Road Parking

Rear Garden

Ground Floor

Approx. 70.8 sq. metres (762.2 sq. feet)



Call Cliftonville - 01843 227447 ■ wardsofkent.co.uk

- A private rental licensing scheme applies to some properties in this area, please contact us before proceeding
- Legal advice should be taken to verify fixtures/fittings, planning, alterations and/or lease details
- Appliances & services are untested, dimensions are approximate and floor plans are not to scale
- Through a Homewise Home For Life Plan people aged 60+ can secure this property for up to 59% less, by purchasing a Lifetime Lease.

