



Price
£167,500

Leasehold

1x  1x  1x 

**Craven Court, Ethelbert
Crescent, Margate, Kent,
CT9**

OVER 60?

Secure this property
for up to **59% less!**

Wards
Helping you move forwards



Main features

- Ground floor flat in an amazing location
- Sit with a cup of tea and admire your own sea views
- Generous size rooms with high ceilings
- Off road parking to the rear
- Walking distance to Margate sandy beaches, shops and restaurants

Accommodation

SPLIT LEVEL UPPER GROUND FLOOR

Hallway

Lounge: 19'0 x 16'9 (5.80m x 5.11m)

Bathroom: 6'11 x 6'8 (2.11m x 2.03m)

Kitchen: 11'2 x 7'3 (3.41m x 2.21m)

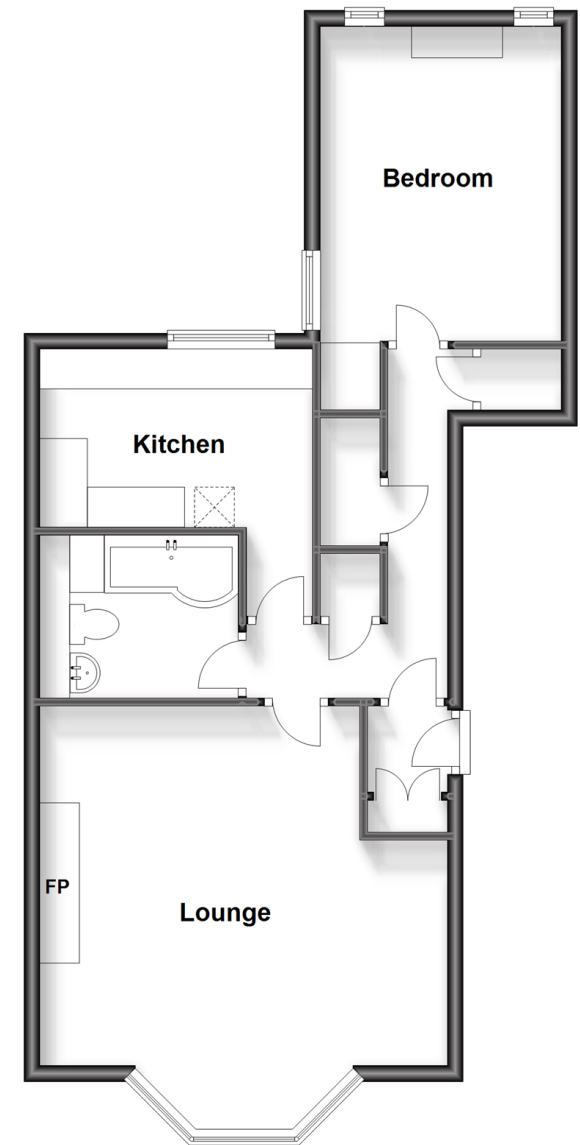
Bedroom: 11'7 x 9'11 (3.53m x 3.02m)

OUTSIDE

Off road parking to the rear

Split Level Upper Ground Floor

Approx. 59.7 sq. metres (642.7 sq. feet)



Call Cliftonville - 01843 227447 ■ wardsofkent.co.uk

- A private rental licensing scheme applies to some properties in this area, please contact us before proceeding
- Legal advice should be taken to verify fixtures/fittings, planning, alterations and/or lease details
- Appliances & services are untested, dimensions are approximate and floor plans are not to scale
- Through a Homewise Home For Life Plan people aged 60+ can secure this property for up to 59% less, by purchasing a Lifetime Lease.