



OVER 60?

Secure this property
for up to **59% less!**

Price
£375,000

Freehold

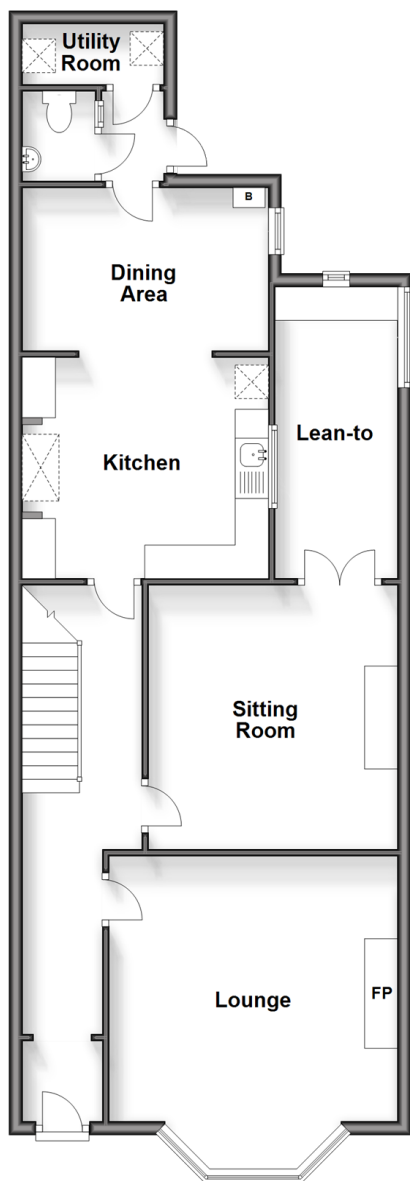
5x  2x  2x 

**Connaught Road,
Margate, Kent, CT9**

Wards
Helping you move forwards

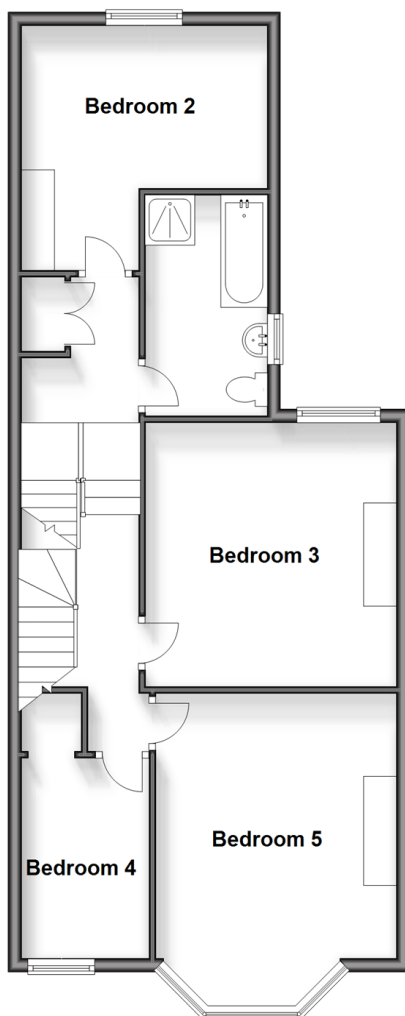
Ground Floor

Approx. 81.3 sq. metres (875.4 sq. feet)



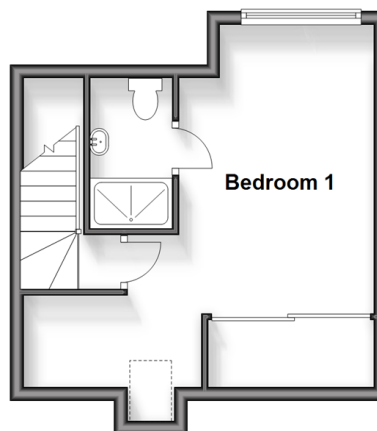
First Floor

Approx. 67.5 sq. metres (726.7 sq. feet)



Second Floor

Approx. 26.5 sq. metres (284.9 sq. feet)



Accommodation

GROUND FLOOR

Hallway

Lounge: 14'4 x 13'2 (4.37m x 4.02m)

Sitting Room : 13'0 x 12'5 (3.97m x 3.79m)

Lean-to

Kitchen: 12'2 x 10'10 (3.71m x 3.30m)

Dining Area: 12'7 x 7'11 (3.84m x 2.41m)

Cloakroom

Utility Room

FIRST FLOOR

Landing

Bedroom 2: 13'9 x 11'3 (4.19m x 3.43m)

Bedroom 3: 13'1 x 11'3 (3.99m x 3.43m)

Bedroom 4: 10'0 x 6'4 (3.05m x 1.93m)

Bedroom 5: 13'1 x 11'3 (3.99m x 3.43m)

Bathroom

SECOND FLOOR

Landing

Bedroom 1: 14'6 x 9'8 (4.42m x 2.95m)

En-suite Shower room

OUTSIDE

Front Garden

Rear Garden

Summer House



Main features

- Spacious period family home with plenty of space for everyone
- Separate lounge and sitting room ideal for entertaining friends and family
- Handy utility room
- Easy to maintain garden
- Summerhouse ideal space for working from home, your own bar or even a gym
- Close to local amenities and bus routes



Nearest Schools

Primary Schools: Salmestone Primary 0.2 miles, Margate, Holy Trinity and St John's C of E Primary 0.3 miles, Drapers Mills Primary 0.3 miles

Secondary Schools: Hartsdown Technology College 0.6



Transport Information

Train Stations: Margate 0.9 miles, Westgate-on-Sea 2.5 miles, Broadstairs 2.8 miles



Address

Connaught Road, Margate, Kent, CT9



Directions

For directions to this property please contact us.



Wards
Helping you move forwards

Call Cliftonville Branch 01843 227447 ■ wardsofkent.co.uk



- A private rental licensing scheme applies to some properties in this area, please contact us before proceeding
- Appliances & services are untested, dimensions are approximate and floor plans are not to scale

- Legal advice should be taken to verify fixtures/fittings, planning, alterations and/or lease details
- Through a Homewise Home For Life Plan people aged 60+ can secure this property for up to 59% less, by purchasing a Lifetime Lease.



15111054/20240415/AP/NF