



OVER 60?

Secure this property
for up to **59% less!**

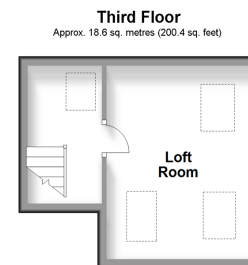
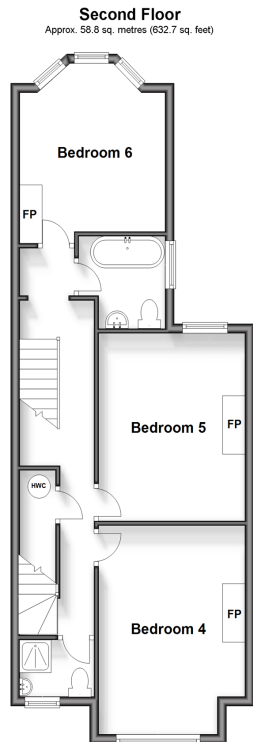
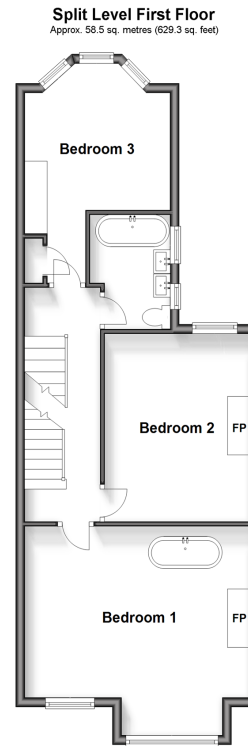
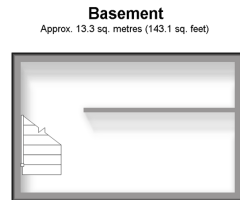
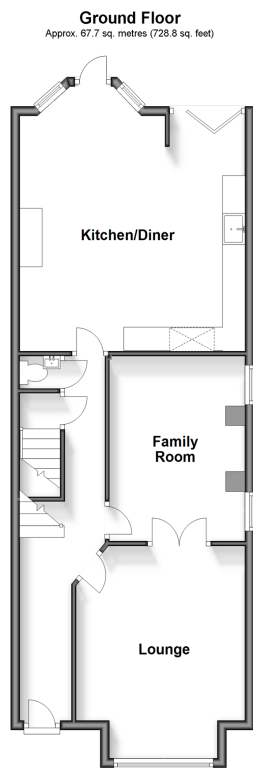
Price
£700,000

Freehold

6x  3x  2x 

**Norfolk Road,
Cliftonville, Margate,
Kent, CT9**

Wards
Helping you move forwards



Accommodation

GROUND FLOOR

Entrance Hall

Lounge: 15'6 x 12'3 (4.73m x 3.74m)

Family Room: 13'4 x 10'0 (4.07m x 3.05m)

Kitchen/Diner: 18'4 x 16'8 (5.59m x 5.08m)

BASEMENT

Cellar

SPLIT LEVEL FIRST FLOOR

Landing

Bathroom 1

Bedroom 1: 15'9 x 11'7 (4.80m x 3.53m)

Bedroom 2: 17'1 x 15'5 (5.21m x 4.70m)

Bedroom 3: 13'0 x 10'0 (3.97m x 3.05m)

SECOND FLOOR

Landing

Bedroom 4: 11'8 x 11'8 (3.56m x 3.56m)

Bedroom 5: 13'4 x 9'3 (4.07m x 2.82m)

Bathroom 2

Bedroom 6: 15'4 x 10'4 (4.68m x 3.15m)

Shower Room

THIRD FLOOR

Loft Room : 10'9 x 9'0 (3.28m x 2.75m)

OUTSIDE

Front Garden

Rear Garden



Main features

- Stunning period home with lots of original features
- Masses of space perfect for entertaining
- Lovely kitchen/diner which leads to the secluded rear garden
- Fantastic location close to sandy beaches, shops and restaurants
- Superb primary bedroom with a roll top bath and original sash windows throughout this home



Nearest Schools

Primary Schools: Cliftonville Primary 0.6 miles, Northdown Primary 1.2 miles, St Gregory's Catholic Primary, Margate 1.3 miles

Secondary Schools: Laleham Gap School 0.7 miles, Royal



Transport Information

Train Stations: Margate 1.7 miles, Broadstairs 3.4 miles, Westgate-on-Sea 3.5 miles



Address

Norfolk Road, Cliftonville, Margate, Kent, CT9



Directions

For directions to this property please contact us.



Wards
Helping you move forwards

Call Cliftonville Branch 01843 227447 ■ wardsofkent.co.uk



- A private rental licensing scheme applies to some properties in this area, please contact us before proceeding
- Appliances & services are untested, dimensions are approximate and floor plans are not to scale

- Legal advice should be taken to verify fixtures/fittings, planning, alterations and/or lease details
- Through a Homewise Home For Life Plan people aged 60+ can secure this property for up to 59% less, by purchasing a Lifetime Lease.



15111107/20240314/VH/VH