



OVER 60?

Secure this property
for up to **59% less!**

Guide Price
£250,000

Leasehold

2x  1x  1x 

**Cornwall Gardens,
Cliftonville, Margate,
Kent, CT9**

Wards
Helping you move forwards



Main features

- Ground floor apartment
- Your own private outside space
- Communal garden
- Lots of handy storage space
- Garage
- Walking distance to Walpole Bay tidal pool and sandy beaches

Accommodation

SPLIT LEVEL GROUND FLOOR

Hallway

Shower Room : 9'1 x 7'9 (2.77m x 2.36m)

Lounge/Diner: 16'10 x 13'6 (5.13m x 4.12m)

Kitchen: 12'10 x 7'4 (3.91m x 2.24m)

Bedroom 1: 13'0 x 10'11 (3.97m x 3.33m)

Bedroom 2: 12'4 x 9'0 (3.76m x 2.75m)

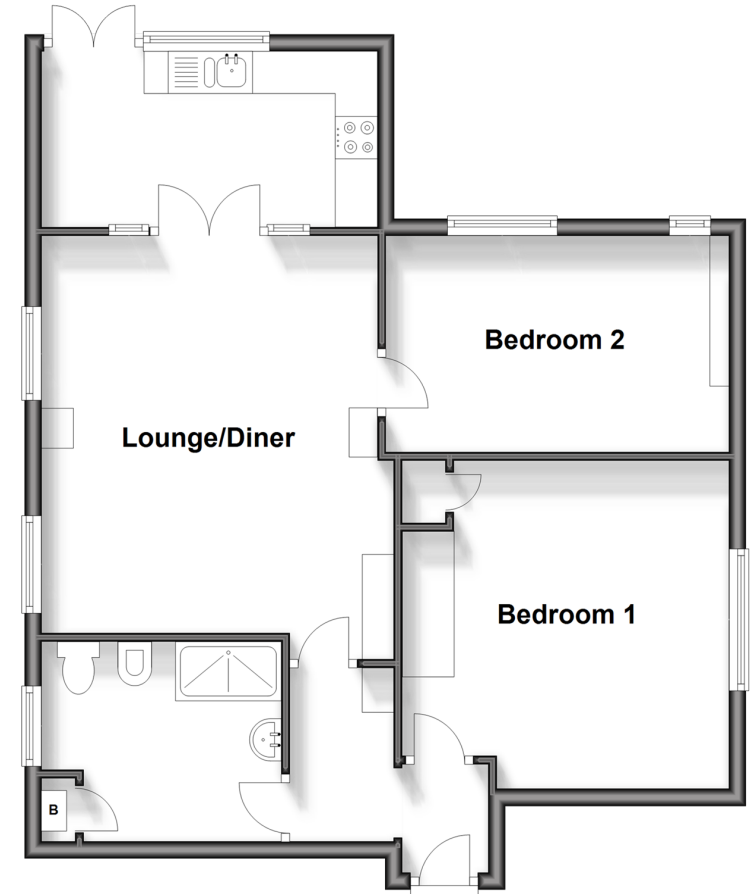
OUTSIDE

Communal Gardens

Garage

Split Level Ground Floor

Approx. 65.8 sq. metres (708.5 sq. feet)



Call Cliftonville - 01843 227447 ■ wardsofkent.co.uk

- A private rental licensing scheme applies to some properties in this area, please contact us before proceeding
- Legal advice should be taken to verify fixtures/fittings, planning, alterations and/or lease details
- Appliances & services are untested, dimensions are approximate and floor plans are not to scale
- Through a Homewise Home For Life Plan people aged 60+ can secure this property for up to 59% less, by purchasing a Lifetime Lease.



15111125/20240417/VH/NF