



Price
£265,000

Freehold

2x  1x  1x 

**Turkey Street,
Cliftonville, London, CT9
1FP**

Wards
Helping you move forwards



Main features

- **Fantastic new build starter home**
- **Handy study/office ideal for working or studying from home**
- **Doors opening out to rear garden from lounge**
- **Suitable for an array of buyers**
- **Off road parking**
- **Convenient location**

Accommodation

GROUND FLOOR

Hallway
Cloakroom
Kitchen: 12'2 x 8'9 (3.71m x 2.67m)
Lounge: 15'6 x 12'2 (4.73m x 3.71m)

FIRST FLOOR

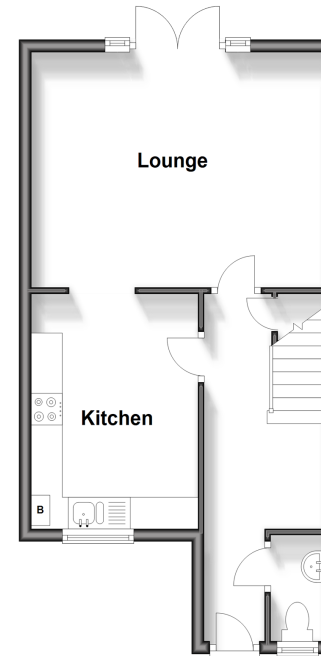
Landing
Bathroom : 8'10 x 5'9 (2.69m x 1.75m)
Bedroom 1: 15'6 x 9'4 (4.73m x 2.85m)
Bedroom 2: 8'10 x 8'10 (2.69m x 2.69m)
Study: 6'9 x 5'6 (2.06m x 1.68m)

OUTSIDE

Front Garden
Off road parking
Rear Garden

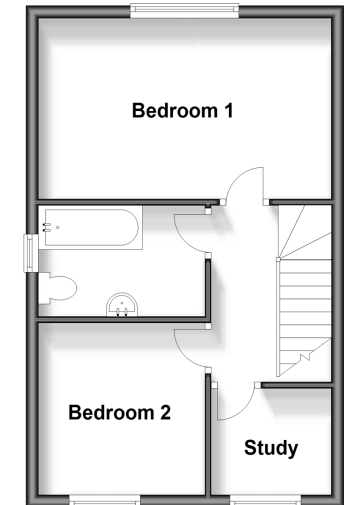
Ground Floor

Approx. 39.1 sq. metres (421.0 sq. feet)



First Floor

Approx. 35.7 sq. metres (383.9 sq. feet)



Call Cliftonville - 01843 227447 ■ wardsofKent.co.uk

- A private rental licensing scheme applies to some properties in this area, please contact us before proceeding
- Legal advice should be taken to verify fixtures/fittings, planning, alterations and/or lease details

- If buying to let, the energy rating will need to be improved to at least 'E' rating before you can let the property
- Appliances & services are untested, dimensions are approximate and floor plans are not to scale



15111142/20240507/DM/NF