



Guide Price
£350,000

Freehold

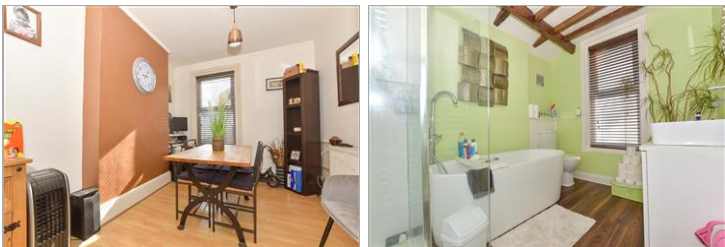
3x  1x  1x 

**Danesmead Terrace,
Margate, Kent, CT9**

OVER 60?

Secure this property
for up to **59% less!**

Wards
Helping you move forwards



Main features

- Well presented family home ready for you to unpack and move straight into
- Separate lounge and dining area ideal for entertaining
- Modern kitchen
- Secluded rear garden
- Within walking distance to Margate sandy beaches

Accommodation

SPLIT LEVEL GROUND FLOOR

Hallway

Lounge: 14'2 x 11'5 (4.32m x 3.48m)

Dining Area: 11'9 x 9'5 (3.58m x 2.87m)

Kitchen: 16'8 x 11'2 (5.08m x 3.41m)

SPLIT LEVEL FIRST FLOOR

Landing

Bathroom: 8'2 x 8'0 (2.49m x 2.44m)

Bedroom 1: 11'3 x 9'5 (3.43m x 2.87m)

Bedroom 2: 14'6 x 9'8 (4.42m x 2.95m)

Bedroom 3: 8'7 x 6'8 (2.62m x 2.03m)

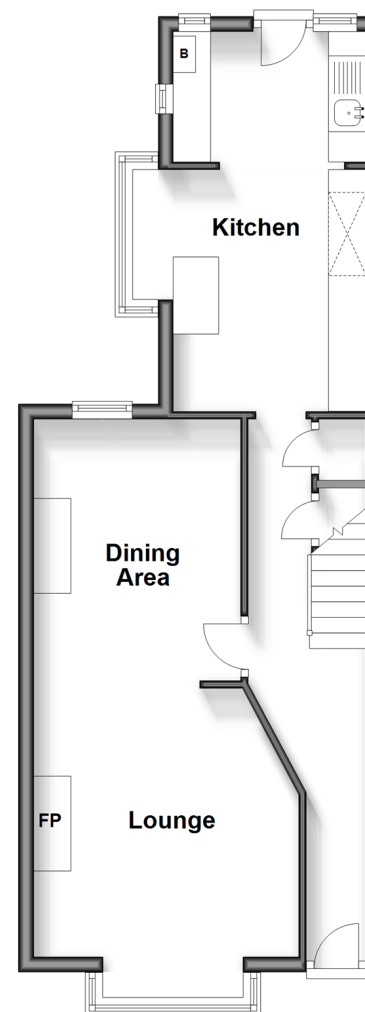
OUTSIDE

Front Garden

Rear Garden

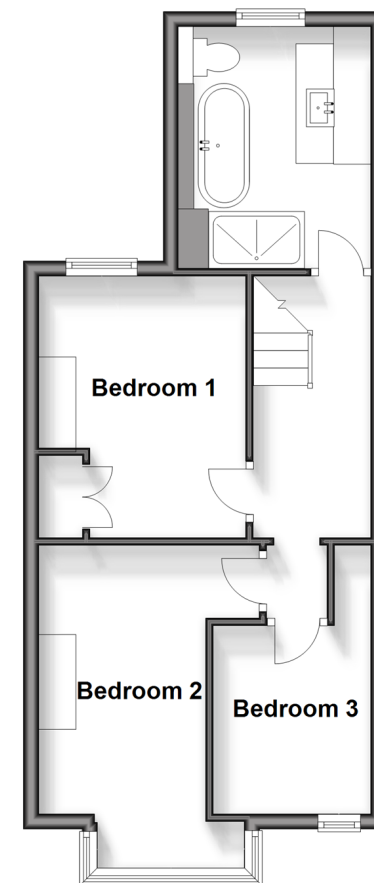
Split Level Ground Floor

Approx. 45.6 sq. metres (490.3 sq. feet)



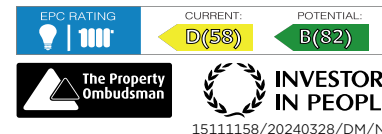
Split Level First Floor

Approx. 41.3 sq. metres (444.7 sq. feet)



Call Cliftonville - 01843 227447 ■ wardsofkent.co.uk

- A private rental licensing scheme applies to some properties in this area, please contact us before proceeding
- Legal advice should be taken to verify fixtures/fittings, planning, alterations and/or lease details
- Appliances & services are untested, dimensions are approximate and floor plans are not to scale
- Through a Homewise Home For Life Plan people aged 60+ can secure this property for up to 59% less, by purchasing a Lifetime Lease.



15111158/20240328/DM/NF