



Guide Price
£450,000

Freehold

3x  1x  1x 

**Devonshire Gardens,
Margate, Kent, CT9**

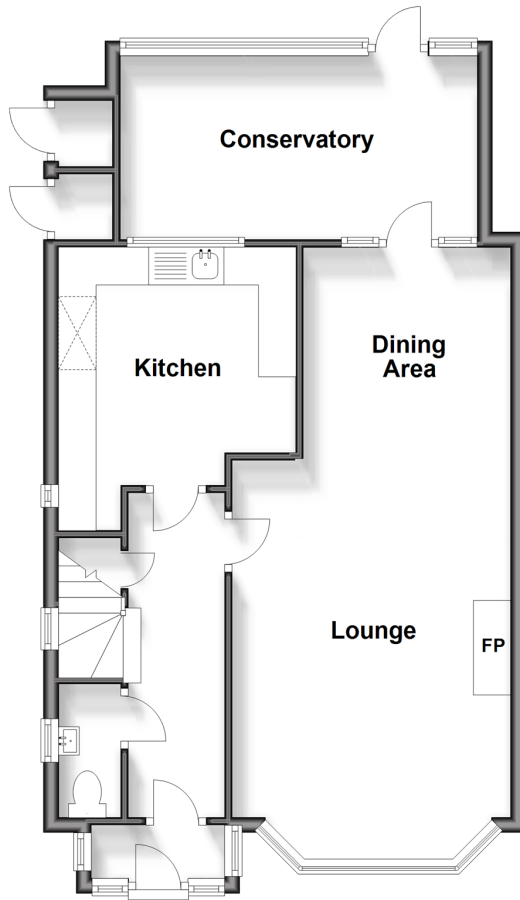
OVER 60?

Secure this property
for up to **59% less!**

Wards
Helping you move forwards

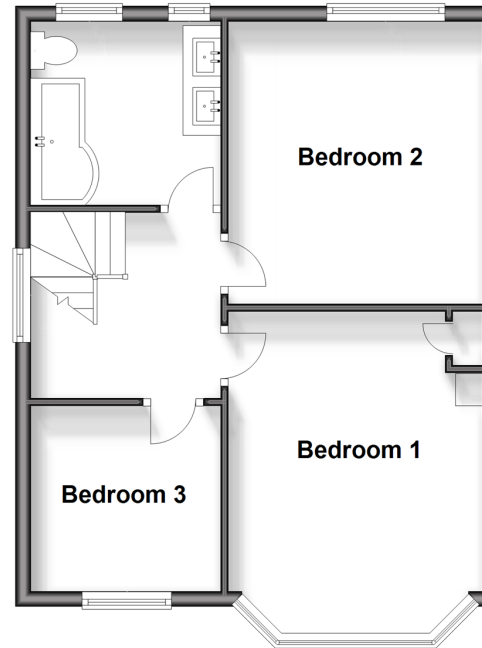
Ground Floor

Approx. 61.1 sq. metres (657.2 sq. feet)



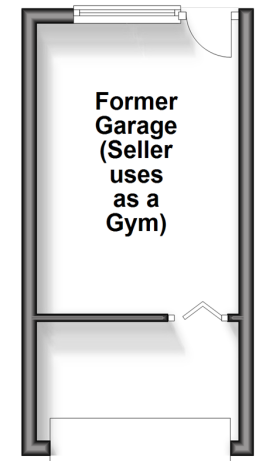
First Floor

Approx. 46.0 sq. metres (495.1 sq. feet)



Outbuilding

Approx. 14.9 sq. metres (160.1 sq. feet)



Accommodation

GROUND FLOOR

Entrance Porch

Hallway

Cloakroom

Lounge/Dining Area: 24'9 x 12'2 (7.55m x 3.71m)

Kitchen: 12'4 x 10'4 (3.76m x 3.15m)

Conservatory: 15'4 x 9'0 (4.68m x 2.75m)

FIRST FLOOR

Landing

Bedroom 1: 12'2 x 11'4 (3.71m x 3.46m)

Bedroom 2: 13'11 x 11'4 (4.24m x 3.46m)

Bedroom 3: 8'1 x 8'0 (2.47m x 2.44m)

Bathroom : 8'1 x 8'1 (2.47m x 2.47m)

OUTSIDE

Front Garden

Garage (seller uses as a gym)

Off Road Parking

Rear Garden



Main features

- Amazing family house ready for you to move straight into
- Sought after location within walking distance to Margate sandy beaches, shops and schools
- Lounge/dining area ideal for entertaining friends and family when they come to visit
- Low maintenance sunny rear garden
- Off road parking
- Current owner is using the garage as a gym



Nearest Schools

Primary Schools: Cliftonville Primary 0.3 miles, Palm Bay Primary 0.9 miles, Northdown Primary 0.9 miles

Secondary Schools: Laleham Gap School 0.5 miles, St Anthony's School 0.8 miles



Transport Information

Train Stations: Margate 1.7 miles, Broadstairs 3.1 miles, Ramsgate 3.1 miles



Address

Devonshire Gardens, Margate, Kent, CT9



Directions

For directions to this property please contact us.



Wards
Helping you move forwards

Call Cliftonville Branch 01843 227447 ■ wardsofkent.co.uk



- A private rental licensing scheme applies to some properties in this area, please contact us before proceeding
- Appliances & services are untested, dimensions are approximate and floor plans are not to scale

- Legal advice should be taken to verify fixtures/fittings, planning, alterations and/or lease details
- Through a Homewise Home For Life Plan people aged 60+ can secure this property for up to 59% less, by purchasing a Lifetime Lease.



15111187/20240416/VH/NF