

OVER 60?

Secure this property
for up to **59% less!**

Price

£130,000

Leasehold

1x  1x  1x 

**Ramsgate Road,
Margate, Kent, CT9**

Wards
Helping you move forwards



Main features

- Ground floor flat
- Chain free
- Ideal for first time buyers
- Blank canvas for you to make your dream home
- Convenient location close to Westwood Cross shopping centre
- The Queen Elizabeth Queen Mother hospital is within walking distance

Accommodation

GROUND FLOOR

Hallway

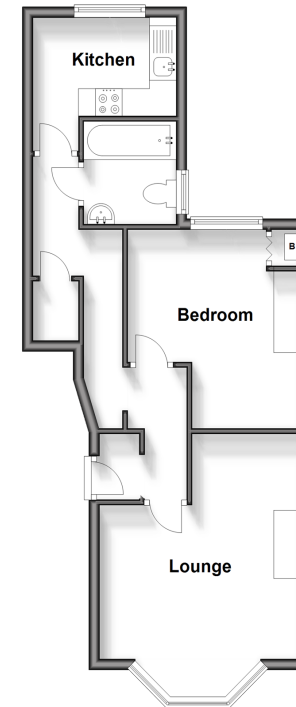
Lounge: 19'7 x 13'1 (5.97m x 3.99m)

Kitchen: 13'9 x 5'9 (4.19m x 1.75m)

Bedroom : 17'0 x 13'0 (5.19m x 3.97m)

Bathroom : 10'11 x 7'7 (3.33m x 2.31m)

Ground Floor
Approx. 43.3 sq. metres (466.3 sq. feet)



Call Cliftonville - 01843 227447 ■ wardsofkent.co.uk

- The seller is a person connected with Wards as defined in the Estate Agents Act 1979
- Legal advice should be taken to verify fixtures/fittings, planning, alterations and/or lease details
- Through a Homewise Home For Life Plan people aged 60+ can secure this property for up to 59% less, by purchasing a Lifetime Lease.

- A private rental licensing scheme applies to some properties in this area, please contact us before proceeding
- Appliances & services are untested, dimensions are approximate and floor plans are not to scale