



**Price**  
**£400,000**

**Freehold**

2x  1x  2x 

**Headcorn Gardens,  
Cliftonville, Margate,  
Kent, CT9**

*Wards*  
Helping you move forwards





## Main features

- Lovely home in quiet cul-de-sac
- Secluded rear garden
- Sought after Palm Bay location close to sandy beaches
- Beautifully presented
- "His and hers" dressing rooms for an extra touch of Hollywood
- Garage on bloc at rear

## Accommodation

### GROUND FLOOR

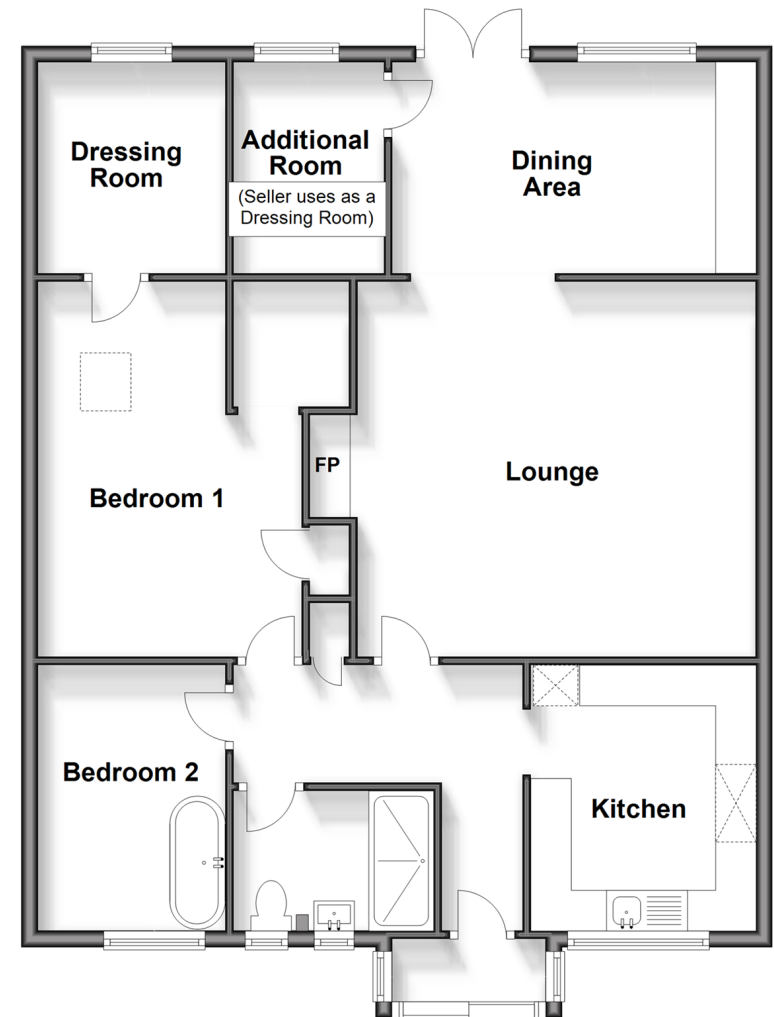
Entrance Porch  
Hallway  
Kitchen: 10'6 x 9'0 (3.20m x 2.75m)  
Shower Room  
Bedroom 2: 10'7 x 7'6 (3.23m x 2.29m)  
Bedroom 1: 15'2 x 10'7 (4.63m x 3.23m)  
Dressing Room 1: 8'5 x 8'3 (2.57m x 2.52m)  
Lounge: 16'4 x 15'2 (4.98m x 4.63m)  
Dining Area: 14'0 x 8'5 (4.27m x 2.57m)  
Additional Room (Dressing Room: 8'5 x 6'4 (2.57m x 1.93m)  
Bathroom

### OUTSIDE

Front Garden  
Garage en bloc at rear  
Off Road Parking  
Rear Garden

### Ground Floor

Approx. 96.6 sq. metres (1040.1 sq. feet)



Call Cliftonville - 01843 227447 ■ [wardsofkent.co.uk](http://wardsofkent.co.uk)

- A private rental licensing scheme applies to some properties in this area, please contact us before proceeding
- Legal advice should be taken to verify fixtures/fittings, planning, alterations and/or lease details
- Appliances & services are untested, dimensions are approximate and floor plans are not to scale