



Price
£640,000

Freehold

6x  3x  3x 

**Thurlow Avenue,
Herne Bay, Kent, CT6**

OVER 60?

Secure this property
for up to **59% less!**

Wards
Helping you move forwards



Main features

- Large driveway and rear garden
- Two en-suite bathrooms
- Fitted kitchen and separate utility room
- Ample space for entertaining with separate lounge, dining area, family area and modern conservatory
- Fitted air conditioning to ground and first floors

Accommodation

GROUND FLOOR

Entrance Hall
 Lounge: 17'10 x 13'5 (5.44m x 4.09m)
 Bedroom 6: 15'4 x 10'11 (4.68m x 3.33m)
 Kitchen Area: 13'4 x 12'2 (4.07m x 3.71m)
 Breakfast Area: 9'3 x 8'2 (2.82m x 2.49m)
 Utility Room: 10'9 x 8'2 (3.28m x 2.49m)
 Cloakroom
 Dining Area: 10'0 x 9'5 (3.05m x 2.87m)
 Family Area: 15'2 x 13'2 (4.63m x 4.02m)
 Conservatory: 15'11 x 12'4 (4.85m x 3.76m)

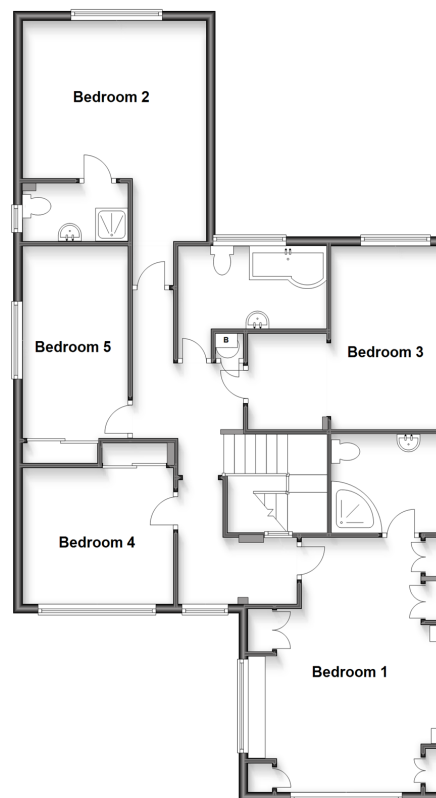
FIRST FLOOR

Landing
 Bedroom 1: 17'11 x 13'5 (5.46m x 4.09m)
 En Suite Shower Room 1
 Bedroom 4: 15'1 x 13'6 (4.60m x 4.12m)
 Bedroom 5: 14'10 x 13'0 (4.52m x 3.97m)
 Bedroom 2: 11'0 x 9'9 (3.36m x 2.97m)
 En Suite Shower Room 2
 Bathroom
 Bedroom 3: 13'6 x 7'7 (4.12m x 2.31m)

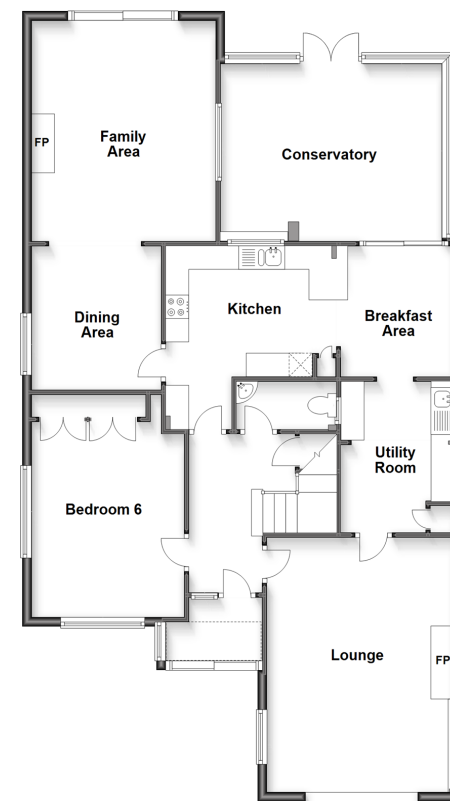
OUTSIDE

Rear Garden
 Front Garden
 Driveway

First Floor
 Approx. 104.8 sq. metres (1128.6 sq. feet)



Ground Floor
 Approx. 127.6 sq. metres (1373.3 sq. feet)



Call Herne Bay - 01227 361226 ■ wardsofkent.co.uk

- Legal advice should be taken to verify fixtures/fittings, planning, alterations and/or lease details
- Appliances & services are untested, dimensions are approximate and floor plans are not to scale
- Through a Homewise Home For Life Plan people aged 60+ can secure this property for up to 59% less, by purchasing a Lifetime Lease.



16002740/20240424/AT/GG