



OVER 60?

Secure this property
for up to **59% less!**

Guide Price
£750,000

Freehold

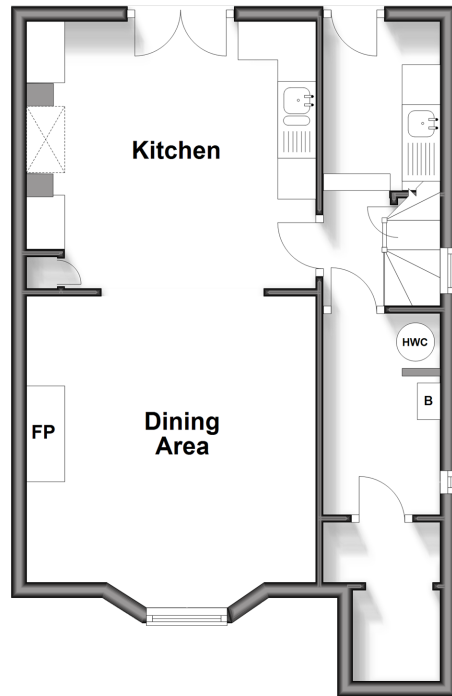
6x  3x  2x 

**The Vale, Broadstairs,
Kent, CT10**

Wards
Helping you move forwards

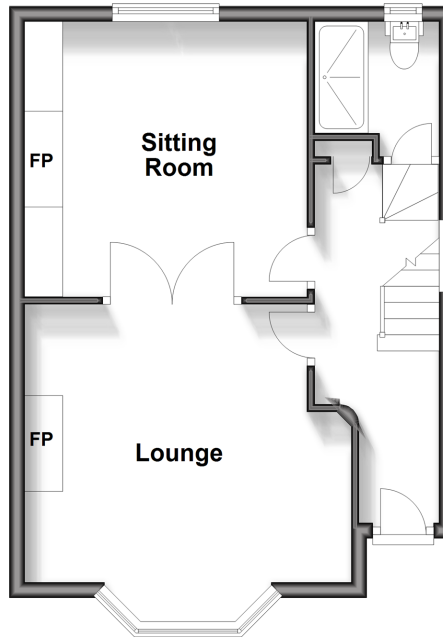
Split Level Lower Ground Floor

Approx. 41.1 sq. metres (442.9 sq. feet)



Split Level Ground Floor

Approx. 39.3 sq. metres (422.5 sq. feet)



Accommodation

SPLIT LEVEL GROUND FLOOR

Lounge : 14'4 x 12'1 (4.37m x 3.69m)

Dining area: 12'0 x 11'7 (3.66m x 3.53m)

Shower Room

LOWER GROUND FLOOR

Utility Room: 8'5 x 5'0 (2.57m x 1.53m)

Kitchen: 11'8 x 11'7 (3.56m x 3.53m)

Dining Area : 13'6 x 12'1 (4.12m x 3.69m)

Storage : 8'6 x 5'1 (2.59m x 1.55m)

FIRST FLOOR

Landing

Bedroom 1: 11'9 x 11'3 (3.58m x 3.43m)

Bedroom 3: 11'8 x 10'1 (3.56m x 3.08m)

Shower Room

Bedroom 5: 8'6 x 6'1 (2.59m x 1.86m)

SECOND FLOOR

Landing

Bedroom 6: 8'7 x 5'8 (2.62m x 1.73m)

Bedroom 2: 12'0 x 11'9 (3.66m x 3.58m)

Bedroom 4: 11'8 x 10'6 (3.56m x 3.20m)

Family Bathroom

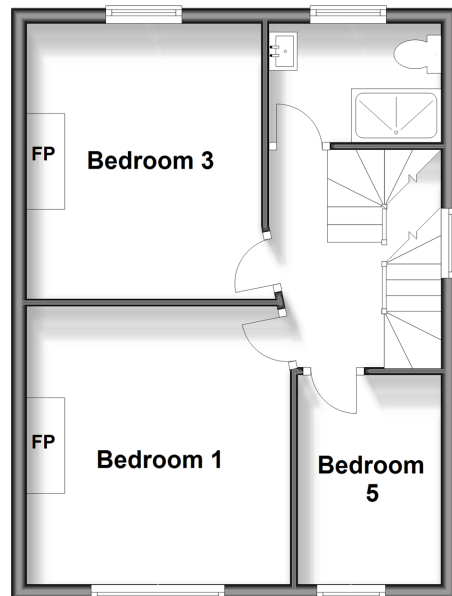
OUTSIDE

Off Road Parking

Rear Garden

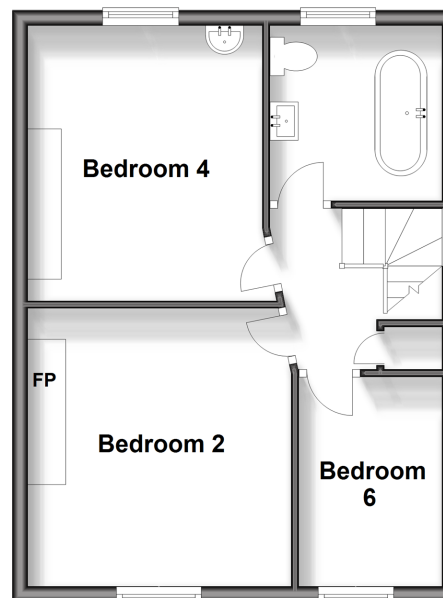
First Floor

Approx. 39.8 sq. metres (428.8 sq. feet)



Second Floor

Approx. 39.8 sq. metres (428.8 sq. feet)





Main features

- Chain Free!
- Off road parking
- Sunny flint walled rear garden
- Central Broadstairs location within minutes to the beach and town
- Immaculately presented
- Fully fitted kitchen with marble worktops



Nearest Schools

Primary Schools: Upton Junior 0.3 miles, Holy Trinity C of E Primary 0.6 miles, St Joseph's Catholic Primary 0.6 miles. Secondary Schools: Bradstow School 0.2 miles, Hereson School 0.2 miles, Charles Dickens School 0.7 miles, Dane Court Grammar 0.8 miles, St George's C of E



Transport Information

Train Stations: Broadstairs 0.3 miles, Dumpton Park 0.8 miles, Ramsgate 1.6 miles



Address

The Vale, Broadstairs, Kent, CT10



Directions

For directions to this property please contact us.



Wards
Helping you move forwards

Call Broadstairs Branch 01843 602546 ■ wardsofkent.co.uk



- A private rental licensing scheme applies to some properties in this area, please contact us before proceeding
- Appliances & services are untested, dimensions are approximate and floor plans are not to scale

- Legal advice should be taken to verify fixtures/fittings, planning, alterations and/or lease details
- Through a Homewise Home For Life Plan people aged 60+ can secure this property for up to 59% less, by purchasing a Lifetime Lease.



16002833/20240406/EB/ATN