



Price

£650,000

Freehold

3x  3x  2x 

**Sutton Road,
Ringwould, Deal, Kent,
CT14**

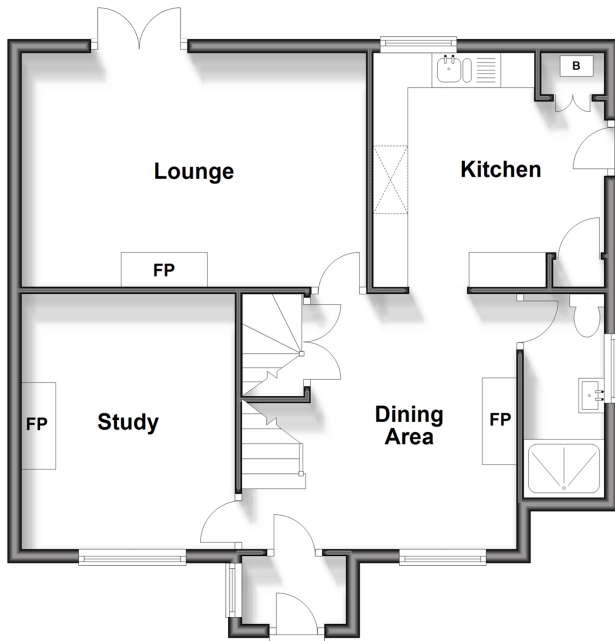
OVER 60?

Secure this property
for up to **59% less!**

Wards
Helping you move forwards

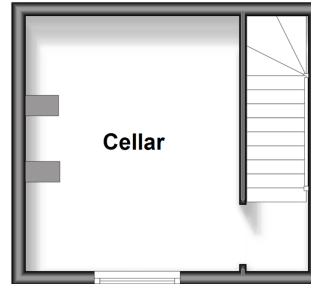
Ground Floor

Approx. 61.2 sq. metres (658.5 sq. feet)



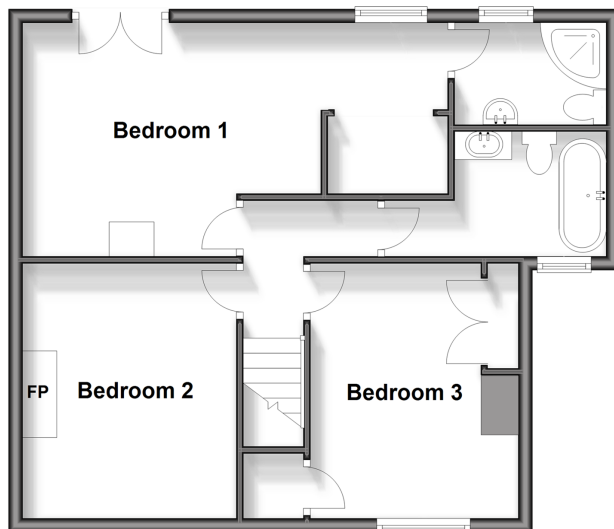
Cellar

Approx. 15.1 sq. metres (162.1 sq. feet)



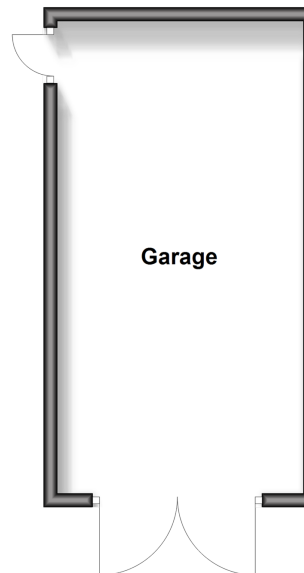
First Floor

Approx. 55.7 sq. metres (599.5 sq. feet)



Outbuilding

Approx. 24.3 sq. metres (261.8 sq. feet)



Accommodation

GROUND FLOOR

Entrance Porch

Study: 11'11 x 10'1 (3.63m x 3.08m)

Dining Area: 11'11 x 9'4 (3.63m x 2.85m)

Shower Room

Lounge: 17'1 x 11'2 (5.21m x 3.41m)

Kitchen : 11'0 x 10'1 (3.36m x 3.08m)

BASEMENT

Cellar : 11'6 x 9'8 (3.51m x 2.95m)

FIRST FLOOR

Landing

Bedroom 2: 12'5 x 10'6 (3.79m x 3.20m)

Bedroom 3: 12'7 x 9'8 (3.84m x 2.95m)

Bedroom 1: 20'1 x 10'9 (6.13m x 3.28m)

En-Suite Shower Room

Walk in Wardrobe

Bathroom

OUTSIDE

Front and Rear Garden

Driveway

Garage



Main features

- Pretty Georgian house on a substantial plot
- Detached garage and driveway for up to five vehicles
- Large rear garden overlooking farmland & woods
- Flexible layout throughout, ideal to suit your family's needs
- Beautifully presented, bursting with character including feature fireplaces and flag stone floor



Nearest Schools

Primary Schools: Kingsdown and Ringwould CofE Primary 0.9 miles, The Downs C of E Primary 1.7 miles, St Mary's Catholic Primary 1.8 miles

Secondary Schools: Learning Opportunities Centre



Transport Information

Train Stations: Walmer 1.3 miles, Martin Mill 1.4 miles, Deal 2.8 miles, Bus links from Dover Road 0.2 miles.



Address

Sutton Road, Ringwould, Deal, Kent, CT14



Directions

For directions to this property please contact us.



Wards
Helping you move forwards

Call Deal Branch 01304 361420 ■ wardsofkent.co.uk



■ Legal advice should be taken to verify fixtures/fittings, planning, alterations and/or lease details ■ Appliances & services are untested, dimensions are approximate and floor plans are not to scale
■ Through a Homewise Home For Life Plan people aged 60+ can secure this property for up to 59% less, by purchasing a Lifetime Lease.



16002851/20240501/LB1/LB1