



Guide Price
£450,000

Freehold

3x  1x  1x 

**Cheviot Close,
Tonbridge, Kent, TN9**

OVER 60?

Secure this property
for up to **59% less!**

Wards
Helping you move forwards



Main features

- Sold with no onward chain
- Garage en bloc
- Spacious modern kitchen
- Situated conveniently with great schools and shops nearby
- Benefiting from two large double bedrooms and a sizeable single

Accommodation

GROUND FLOOR

Hallway
Downstairs Cloakroom
Lounge: 18'5 x 13'0 (5.62m x 3.97m)
Kitchen: 15'9 x 11'7 (4.80m x 3.53m)

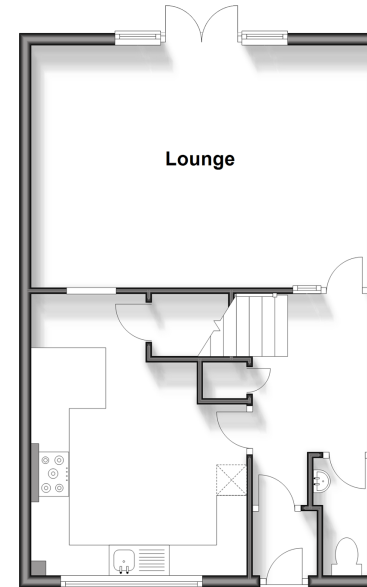
FIRST FLOOR

Landing
Bedroom 1: 12'11 x 11'3 (3.94m x 3.43m)
Balcony
Bedroom 2: 12'4 x 11'9 (3.76m x 3.58m)
Bedroom 3: 9'11 x 7'0 (3.02m x 2.14m)
Shower Room

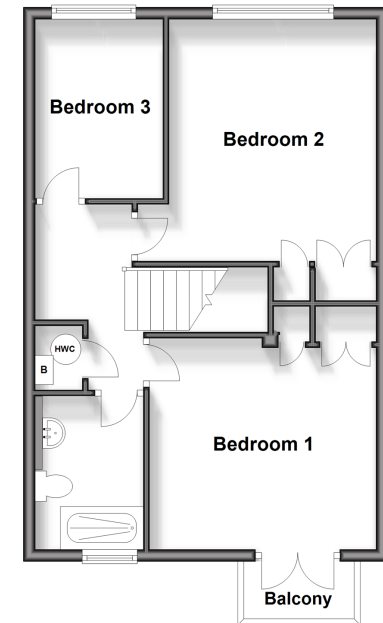
OUTSIDE

Front & Rear Gardens
Garage

Ground Floor
Approx. 49.2 sq. metres (529.9 sq. feet)



First Floor
Approx. 49.2 sq. metres (529.9 sq. feet)



Call Tonbridge - 01732 770755 ■ wardsofkent.co.uk

■ Legal advice should be taken to verify fixtures/fittings, planning, alterations and/or lease details
■ Through a Homewise Home For Life Plan people aged 60+ can secure this property for up to 59% less, by purchasing a Lifetime Lease.

■ Appliances & services are untested, dimensions are approximate and floor plans are not to scale



17166296/20240516/HG/GA