



Price
£115,000

Leasehold

1x  1x  1x 

**Crawley Court, West
Street, Gravesend, Kent,
DA11**

OVER 60?

Secure this property
for up to **59% less!**

Wards
Helping you move forwards



Main features

- Ideal for commuters with a short walk to Gravesend train station
- Gravesend town centre close by
- Allocated parking space for 1 vehicle with additional visitor spaces
- Lift access to communal area and beautiful river views
- Exciting first-time purchase or investment opportunity

Accommodation

SECOND FLOOR

Entrance Hall

Lounge/Bedroom: 12'7 x 11'11 (3.84m x 3.63m)

Juliette Balcony

Kitchen : 9'10 x 5'9 (3.00m x 1.75m)

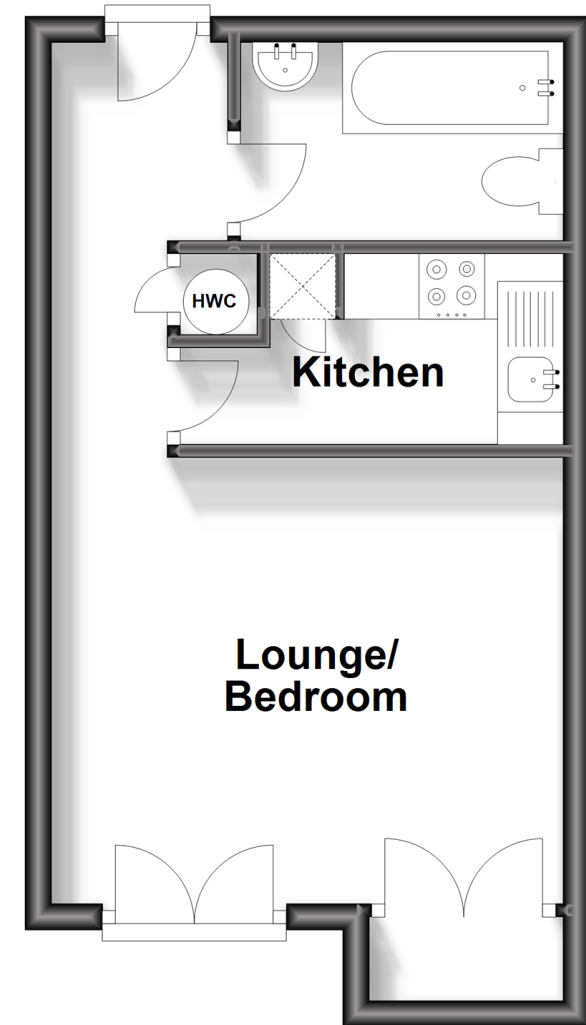
Bathroom : 8'2 x 4'11 (2.49m x 1.50m)

OUTSIDE

Allocated Parking Space

Second Floor

Approx. 26.8 sq. metres (288.0 sq. feet)



Call Gravesend - 01474 352417 ■ wardsofkent.co.uk

- The seller is a person connected with Wards as defined in the Estate Agents Act 1979
- Legal advice should be taken to verify fixtures/fittings, planning, alterations and/or lease details
- Appliances & services are untested, dimensions are approximate and floor plans are not to scale
- Through a Homewise Home For Life Plan people aged 60+ can secure this property for up to 59% less, by purchasing a Lifetime Lease.

