



**Guide Price**  
**£400,000**

**Freehold**

4x  2x  1x 

**Oswald Drive, Strood,  
Rochester, Kent, ME2**

**OVER 60?**

Secure this property  
for up to **59% less!**

*Wards*  
Helping you move forwards





## Main features

- **Fabulous 4 double bedroom town house on a modern development**
- **Surrounding green spaces and play parks**
- **Within one mile of the A2/M2 and a quarter of a mile from Medway Valley Leisure Park**
- **En-suite shower room**
- **Allocated parking**
- **Approximately 2 miles from Strood mainline railway station**
- **Close to supermarkets and the historic town of Rochester**

## Accommodation

### GROUND FLOOR

Entrance Hall  
Cloakroom  
Kitchen : 12'0 x 9'7 (3.66m x 2.92m)  
Lounge/Diner: 14'6 x 14'5 (4.42m x 4.40m)

### FIRST FLOOR

Landing  
Bedroom 1: 14'6 x 14'4 (4.42m x 4.37m)  
En-Suite Shower Room: 7'4 x 6'2 (2.24m x 1.88m)  
Bedroom 2: 12'3 x 9'0 (3.74m x 2.75m)

### SECOND FLOOR

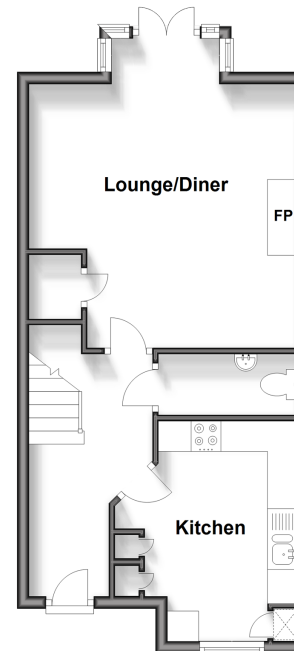
Landing  
Bedroom 3: 14'4 x 9'0 (4.37m x 2.75m)  
Bedroom 4: 14'5 x 8'11 (4.40m x 2.72m)  
Bathroom : 7'1 x 6'1 (2.16m x 1.86m)

### OUTSIDE

Allocated Parking Space  
Rear Garden

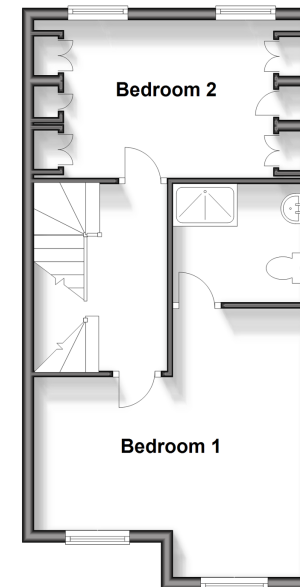
### Ground Floor

Approx. 40.9 sq. metres (440.6 sq. feet)



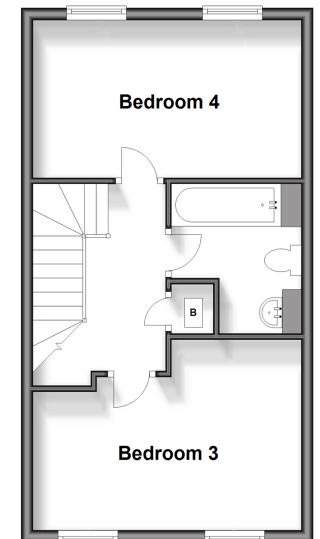
### First Floor

Approx. 39.5 sq. metres (425.0 sq. feet)



### Second Floor

Approx. 37.8 sq. metres (406.9 sq. feet)



**Call Strood - 01634 716597 ■ [wardsofkent.co.uk](http://wardsofkent.co.uk)**

■ Legal advice should be taken to verify fixtures/fittings, planning, alterations and/or lease details  
■ Through a Homewise Home For Life Plan people aged 60+ can secure this property for up to 59% less, by purchasing a Lifetime Lease.

■ Appliances & services are untested, dimensions are approximate and floor plans are not to scale



18269188/20240221/FA/JC