



Guide Price
£550,000
Freehold

5x  1x  3x 

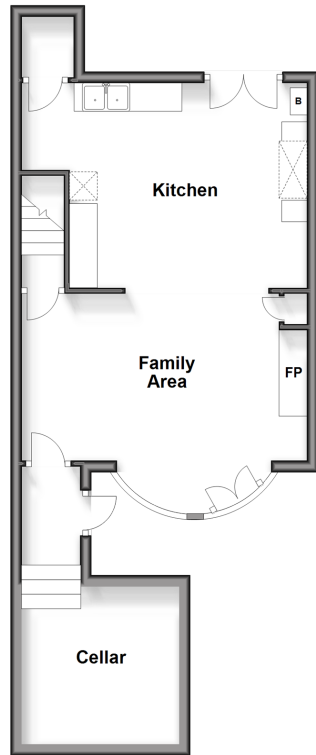
**Adelaide Gardens,
Ramsgate, Kent, CT11**

OVER 60?

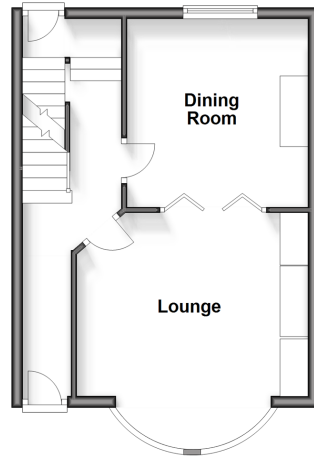
Secure this property
for up to **59% less!**

Wards
Helping you move forwards

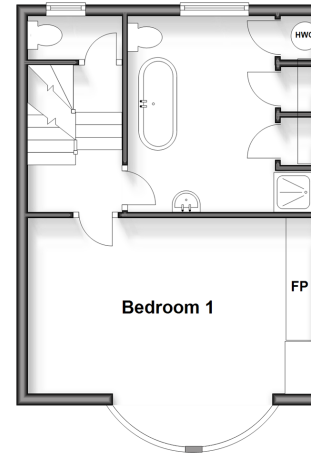
Lower Ground Floor
Approx. 46.0 sq. metres (495.4 sq. feet)



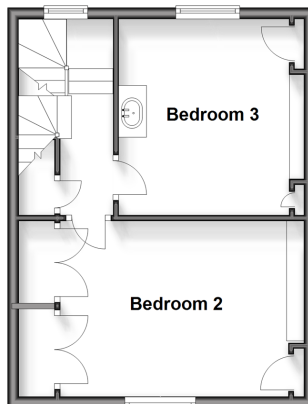
Ground Floor
Approx. 34.7 sq. metres (373.8 sq. feet)



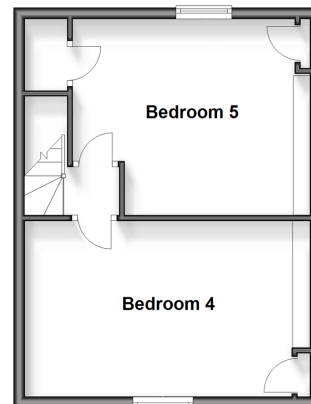
Split Level First Floor
Approx. 34.7 sq. metres (373.9 sq. feet)



Second Floor
Approx. 34.2 sq. metres (367.7 sq. feet)



Third Floor
Approx. 34.2 sq. metres (367.7 sq. feet)



Accommodation

GROUND FLOOR

Entrance Hallway

Lounge : 13'6 x 10'8 (4.12m x 3.25m)

Dining Room : 11'0 x 10'11 (3.36m x 3.33m)

LOWER GROUND FLOOR

Kitchen : 16'8 x 11'2 (5.08m x 3.41m)

Family Area: 16'0 x 10'3 (4.88m x 3.13m)

Cellar Area : 9'1 x 7'8 (2.77m x 2.34m)

SPLIT LEVEL FIRST FLOOR

Landing

Bathroom : 11'0 x 8'5 (3.36m x 2.57m)

Separate Toilet

Bedroom 1 : 17'3 x 10'11 (5.26m x 3.33m)

SECOND FLOOR

Landing

Bedroom 2 : 13'10 x 10'11 (4.22m x 3.33m)

Bedroom 3 : 11'3 x 9'10 (3.43m x 3.00m)

THIRD FLOOR

Landing

Bedroom 4 : 15'7 x 11'2 (4.75m x 3.41m)

Bedroom 5 : 12'1 x 11'1 (3.69m x 3.38m)

OUTSIDE

Garden to Front



Main features

- Grade II listed property in a sought-after location, a very rare opportunity
- Sea views of the English channel
- Beautiful front garden, ideal for a keen gardener
- Presented to a high standard whilst maintaining its original features.
- Located just moments from the only Royal Harbour in the country



Nearest Schools

Primary Schools: Ramsgate, Christ Church C of E Junior School 0.7 miles, St Laurence in Thanet C of E Junior School 1.0 miles
Secondary Schools: Clarendon and Chatham House Grammar School 0.2 miles, St Lawrence College 1.2 miles



Transport Information

Train Stations: Ramsgate 1.1 miles, Dumpton Park 1.9 miles, Broadstairs 3.4 miles



Address

Adelaide Gardens, Ramsgate, Kent, CT11



Directions

For directions to this property please contact us.



Wards
Helping you move forwards

Call Ramsgate Branch 01843 580314 ■ wardsofkent.co.uk



- A private rental licensing scheme applies to some properties in this area, please contact us before proceeding
- Appliances & services are untested, dimensions are approximate and floor plans are not to scale

- Legal advice should be taken to verify fixtures/fittings, planning, alterations and/or lease details
- Through a Homewise Home For Life Plan people aged 60+ can secure this property for up to 59% less, by purchasing a Lifetime Lease.

