



Price
£260,000

Freehold

2x  1x  1x 

**Bull Lane, Higham,
Rochester, Kent, ME3**

OVER 60?

Secure this property
for up to **59% less!**

Wards
Helping you move forwards



Main features

- A great first time buy in the sought after village of Higham
- Lounge/diner
- Views of open fields
- Short walk to Higham train station
- Offered for sale with no forward chain
- Bathroom is accessed via Bedroom 1

Accommodation

GROUND FLOOR

Entrance Porch

Lounge/Diner: 23'6 x 12'11 (7.17m x 3.94m)

Kitchen : 12'10 x 6'8 (3.91m x 2.03m)

SPLIT LEVEL FIRST FLOOR

Bedroom 2: 11'5 x 9'6 (3.48m x 2.90m)

Bedroom 1: 11'4 x 11'2 (3.46m x 3.41m)

Bathroom

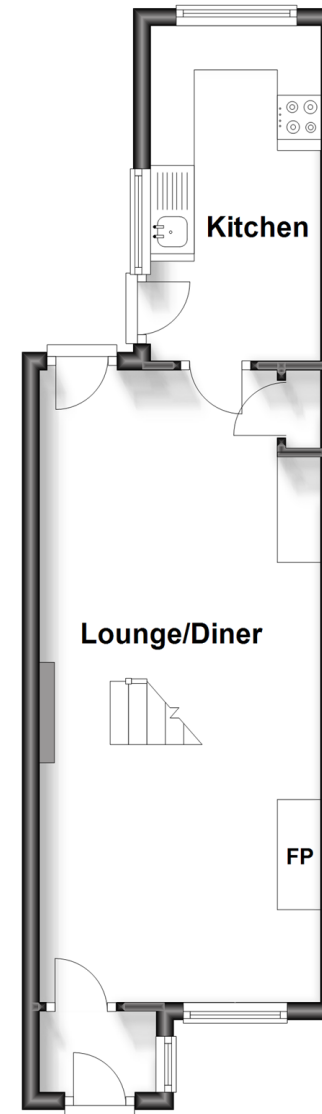
OUTSIDE

Front Garden

Rear Garden

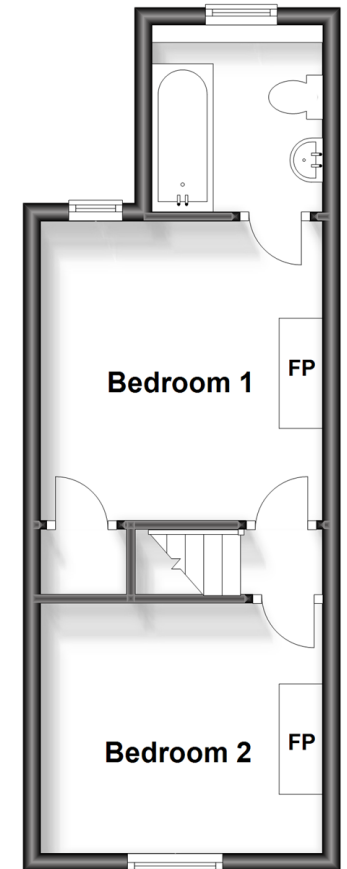
Ground Floor

Approx. 32.2 sq. metres (346.1 sq. feet)



Split Level First Floor

Approx. 27.5 sq. metres (296.1 sq. feet)



Call Gravesend - 01474 352417 ■ wardsofkent.co.uk

- Legal advice should be taken to verify fixtures/fittings, planning, alterations and/or lease details
- Appliances & services are untested, dimensions are approximate and floor plans are not to scale
- Through a Homewise Home For Life Plan people aged 60+ can secure this property for up to 59% less, by purchasing a Lifetime Lease.



51915788/20230809/MM/SB